

Advanced Bifurcation Systems

Mother-Daughter Platform

full bifurcation and provisional side-branch stenting

Mehran J. Khorsandi, MD, FACP, FACC, FSCAI

Cedars-Sinai Heart Institute
Los Angeles, California

Stents and delivery balloons designed for non-bifurcation lesions have been used with creative, tedious techniques adapting them for bifurcations as well as possible; however with inherent limitations

(recrossing needs, gaps or overlaps, mal-apposition, higher acute failure and restenosis rates compared to non-bifurcation lesions).

ABS

A simple system Designed for the

Left Main and large bifurcations

ABS

A simple system designed for the Left Main and large bifurcations

- No new skill-set required
- Conventional sizing based on Murray's/Finet's law
- No wire recrossing
- No additional balloons to complete the procedure
- Evenly scaffolds all bifurcations with automatic alignment
- No gaps, or overlaps
- Highly deliverable with a low crossing leading edge profile

ABS

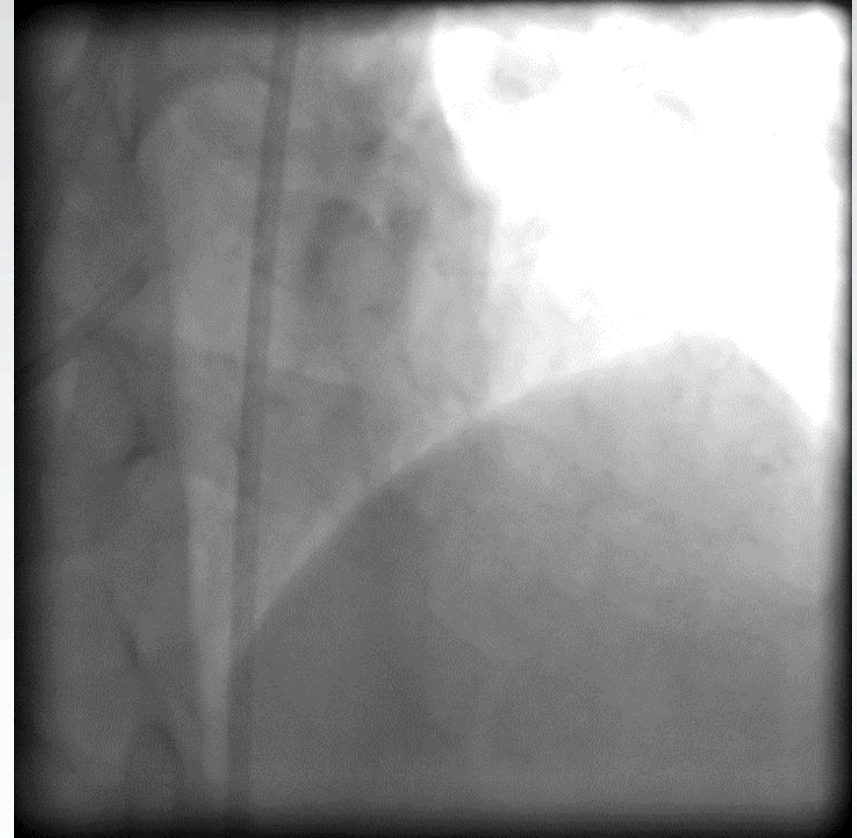
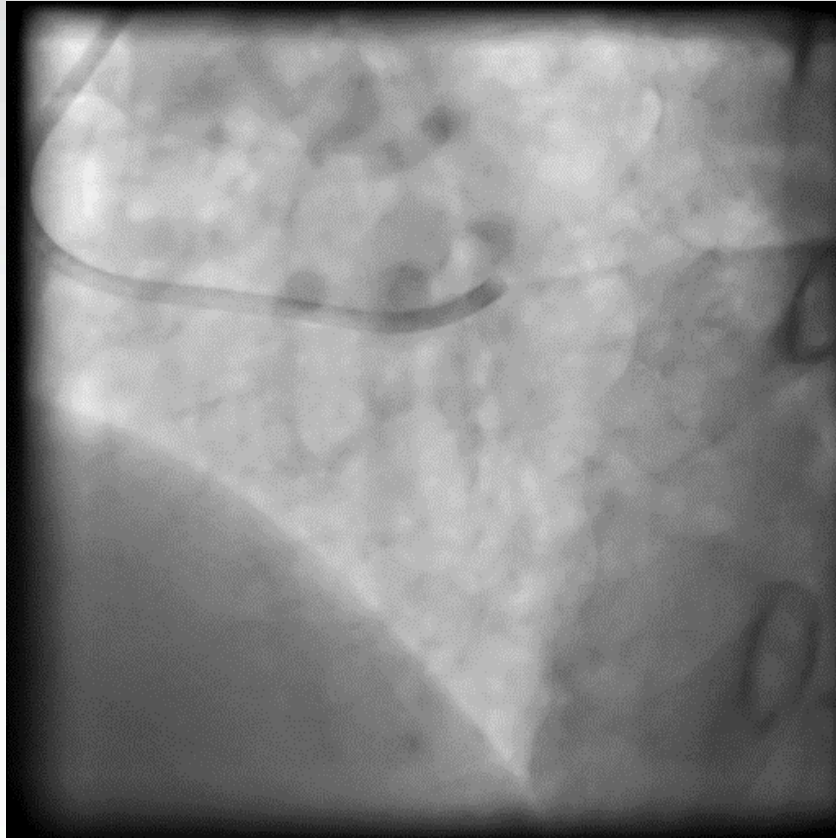
Bifurcation Stenting Animation



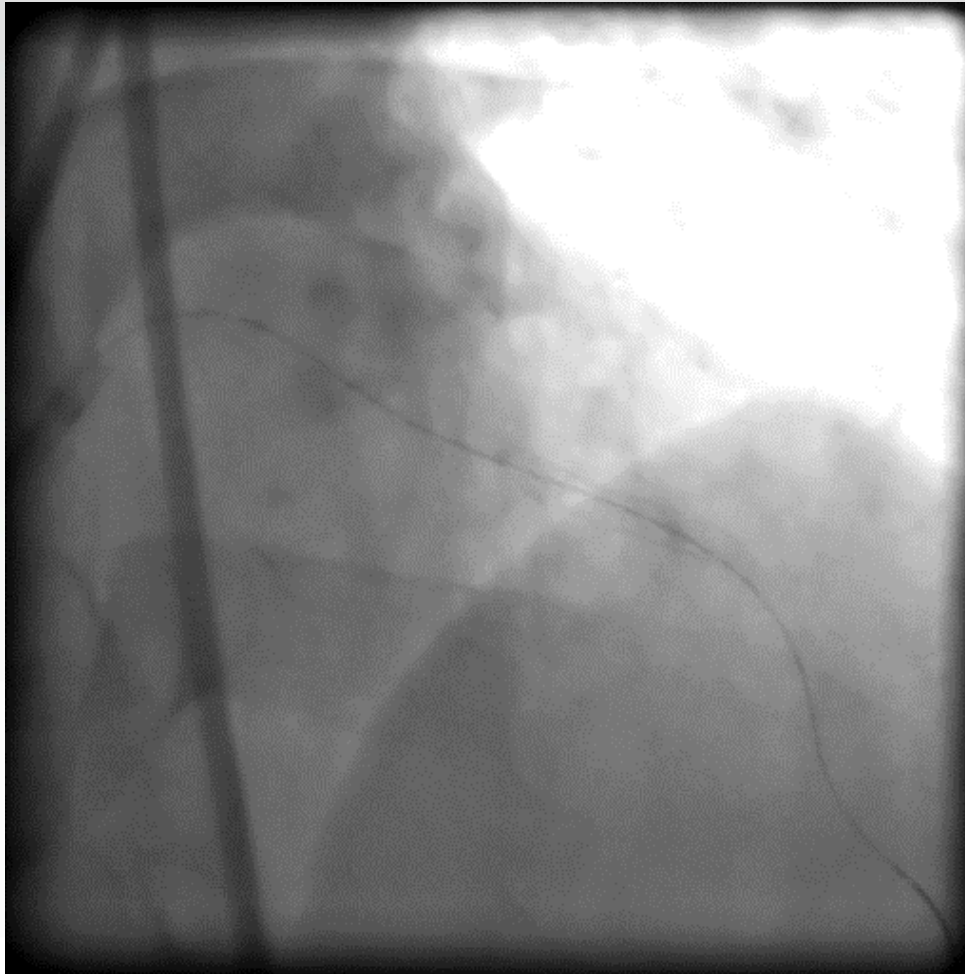
ABS Case Presentation

- Sao Paulo (Alex Abizaid, Ricardo Costa)
- 51 year old male
- Presented with acute myocardial infarction!
- Hypertension, Hyperlipidemia
- Obviously unplanned!

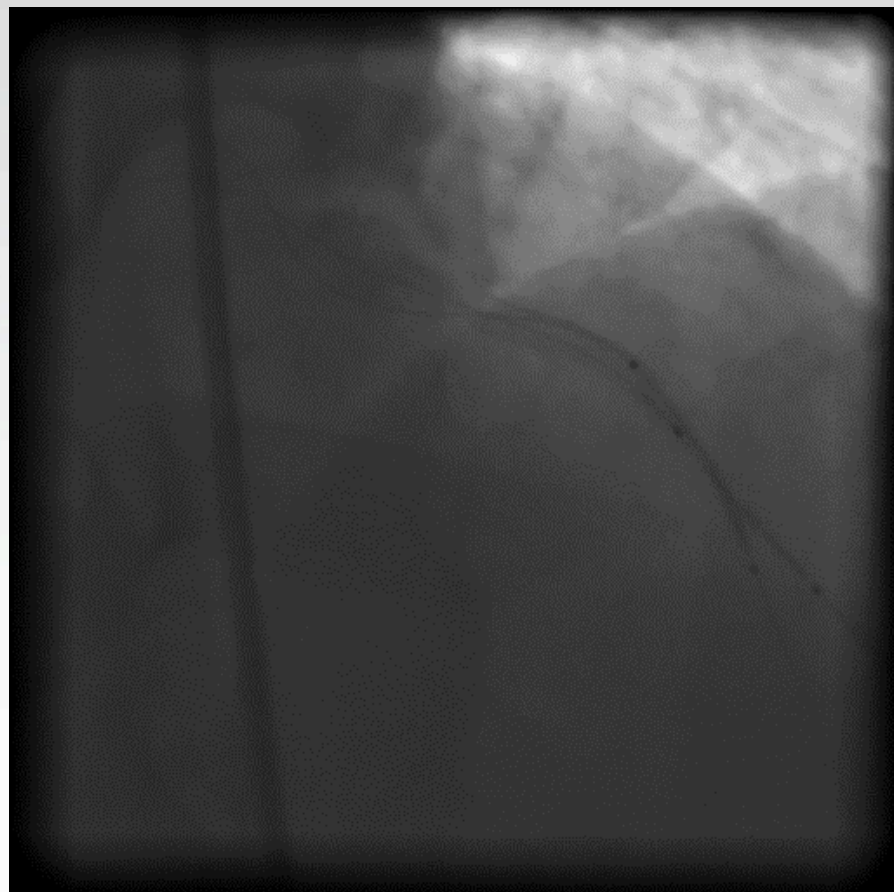
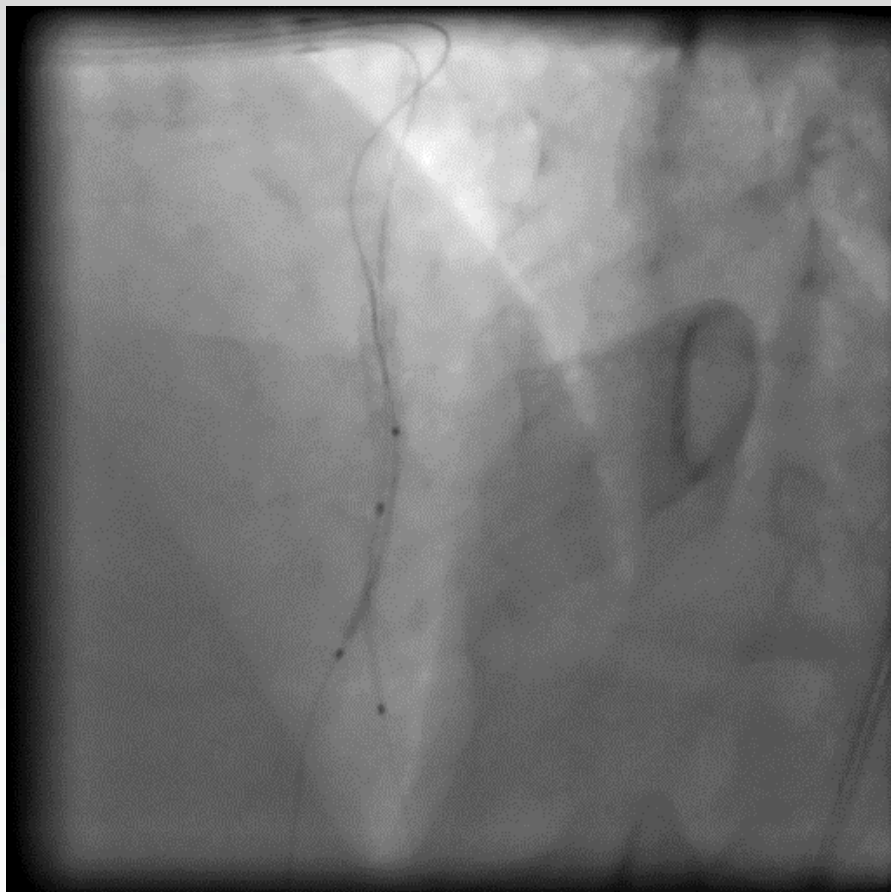
Baseline Angio



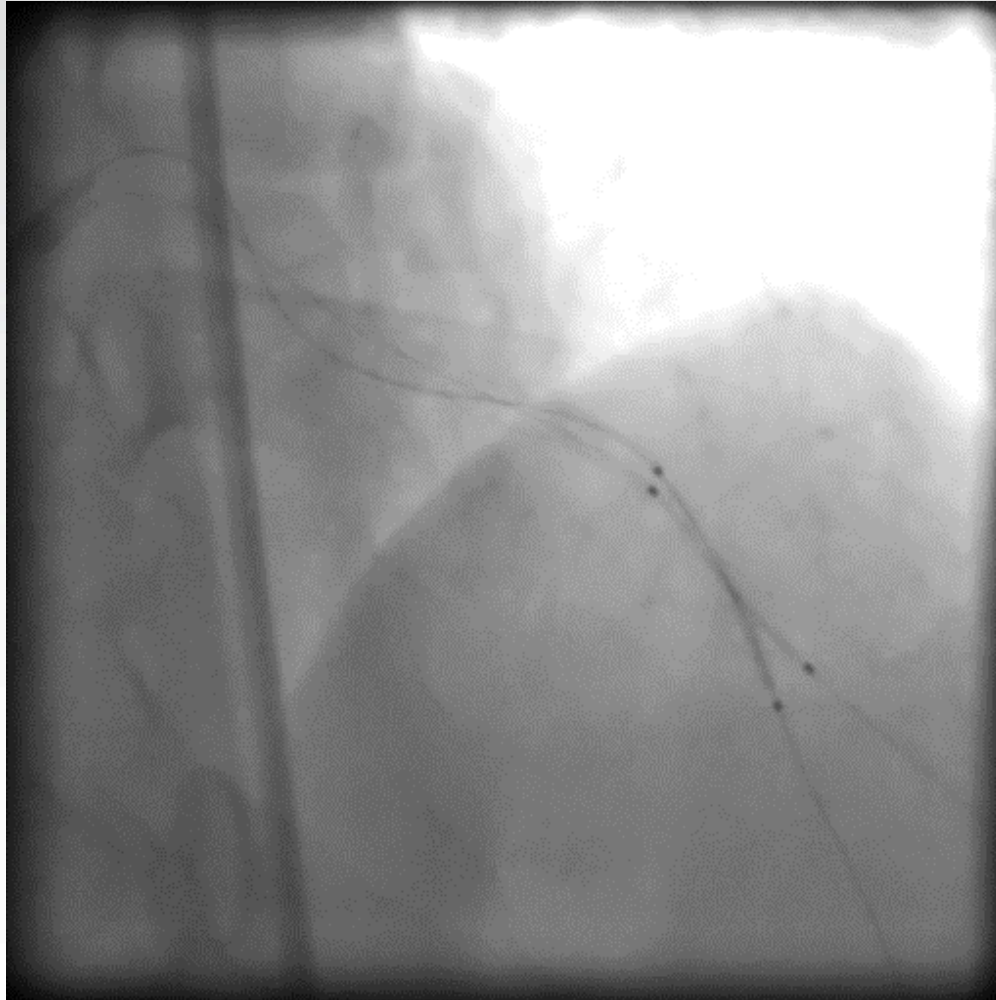
Proximal Stent



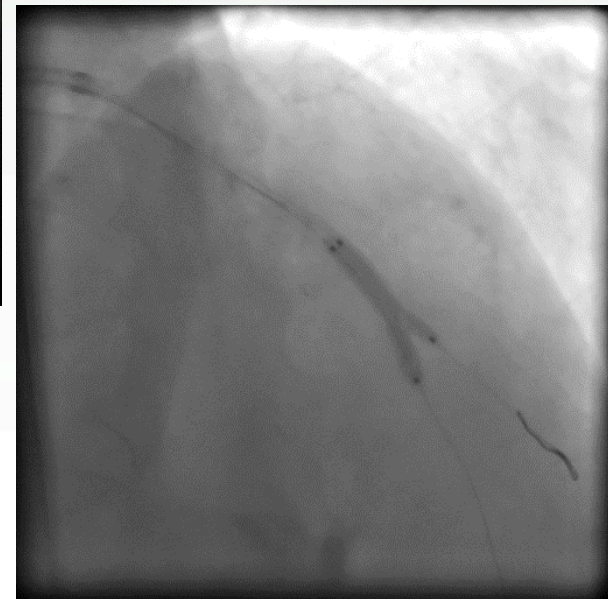
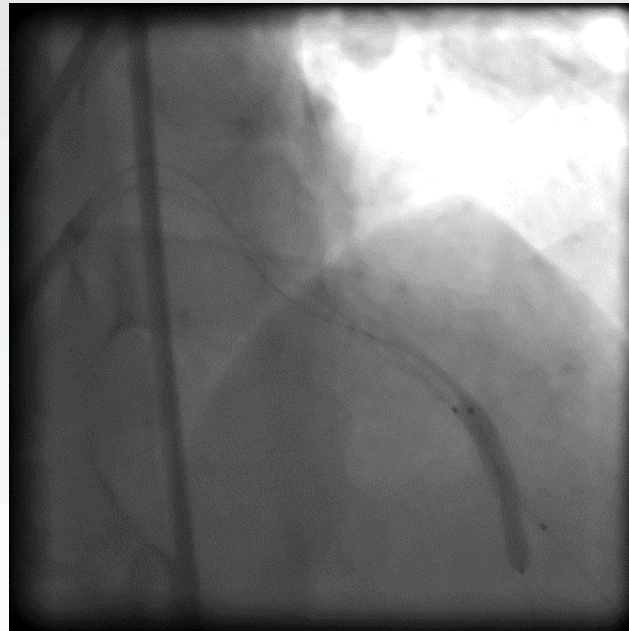
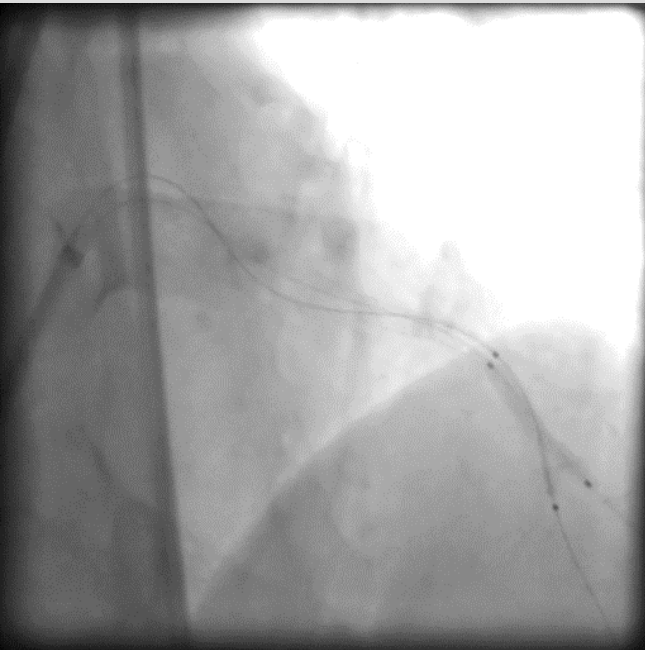
Daughter Stent Leading



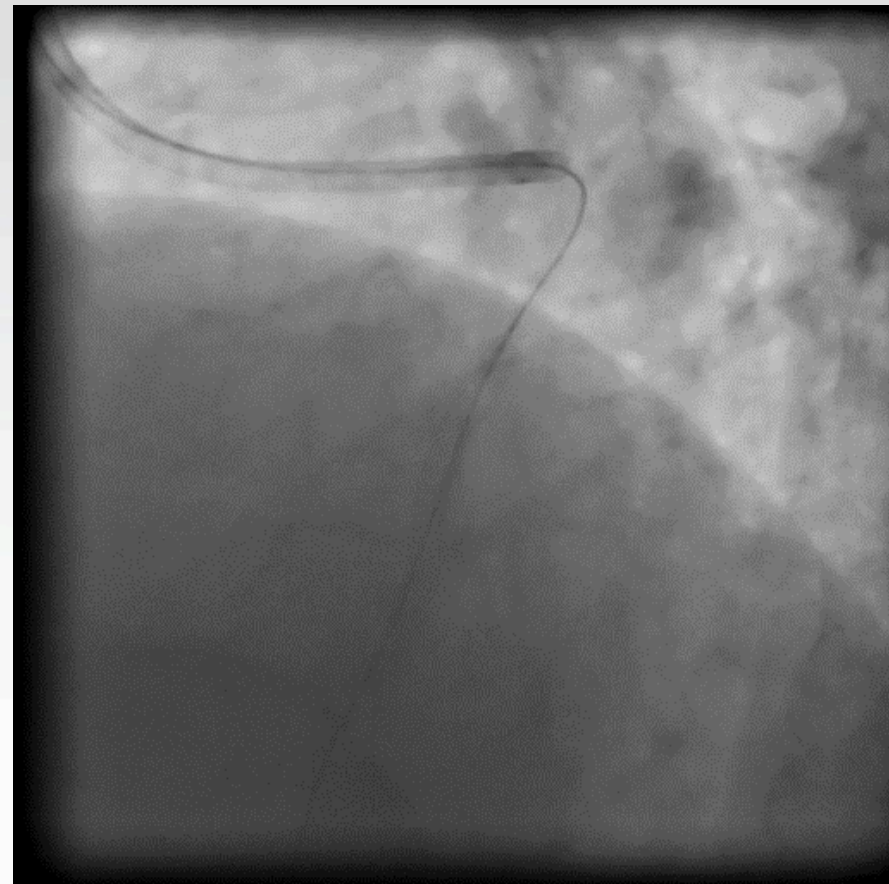
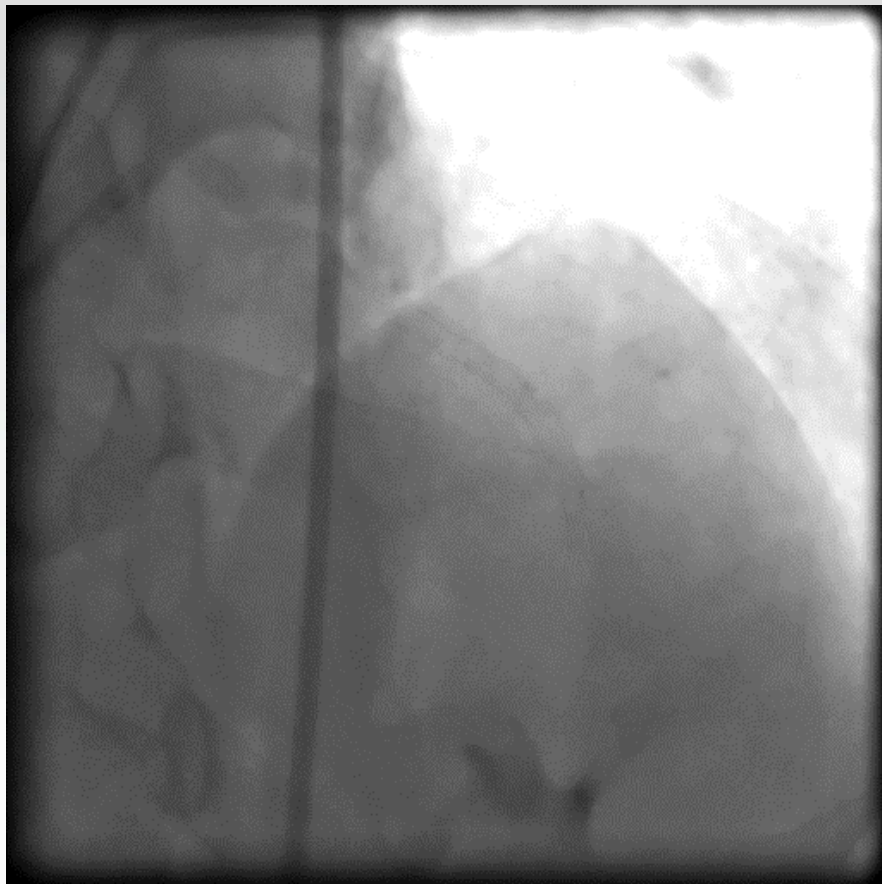
System Assembled at the Carina



Daughter, Mother and Kissing Balloon Inflation



Final Angio



49 year old male with multi-vessel
disease

LAD/Diagonal

LCx

RCA

All done in one session

Baseline Angio



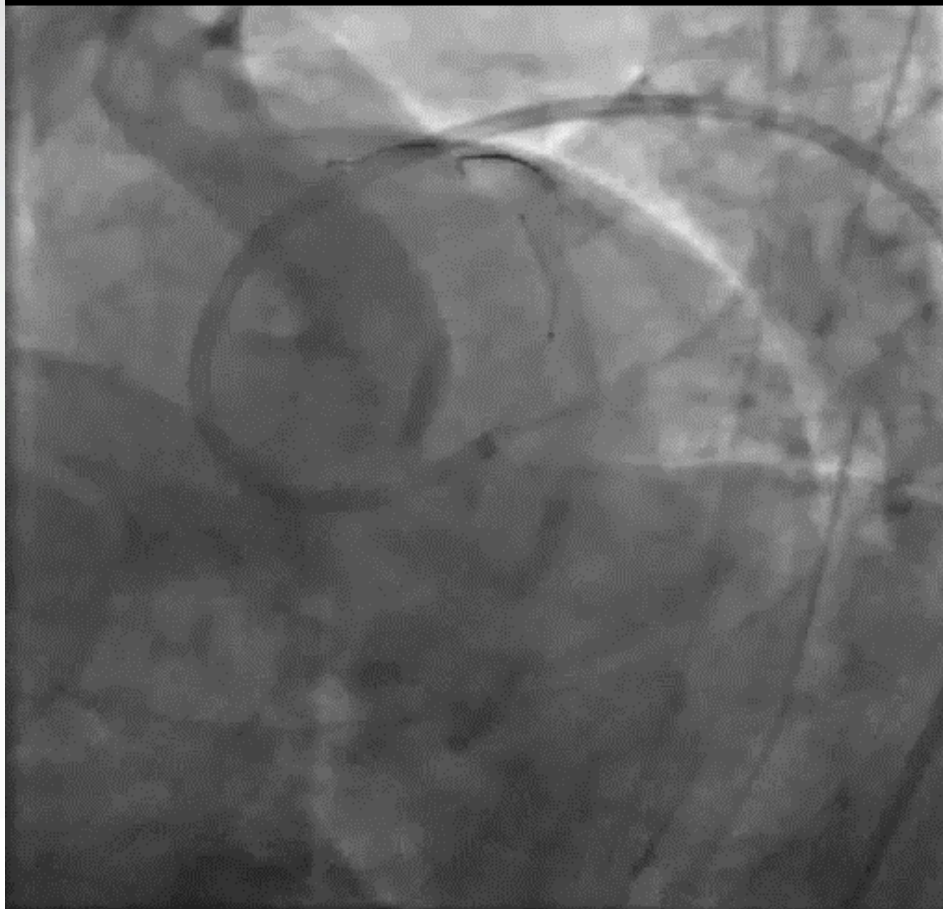
Mother Stent at the Carina – Daughter Leading

Lossy compression - not intended for diagnosis



Daughter Catheter Pullback

Lossy compression - not intended for diagnosis



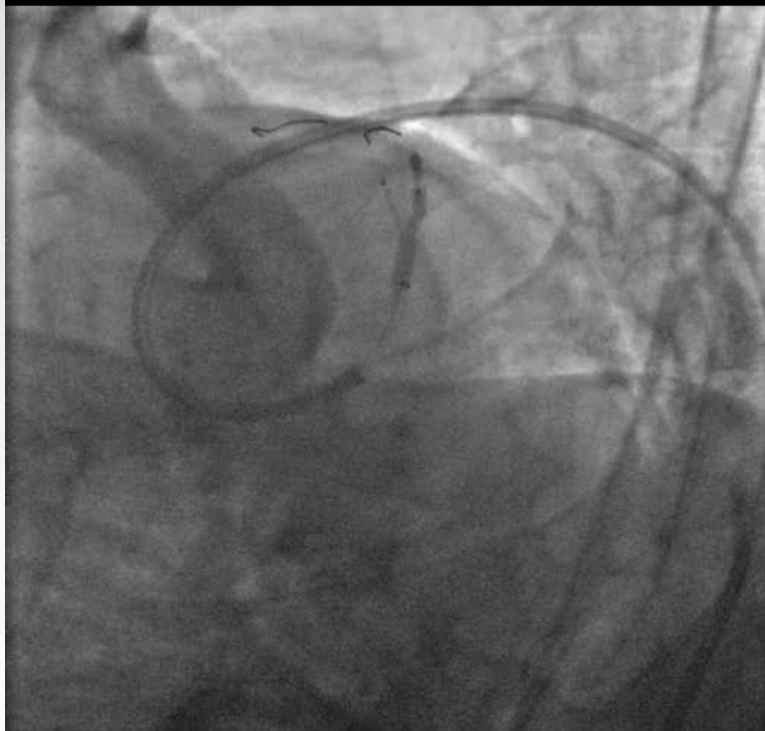
Stent Assembly at the Carina

Lossy compression - not intended for diagnosis



Daughter and Mother Balloon Inflations

Lossy compression - not intended for diagnosis



Lossy compression - not intended for diagnosis

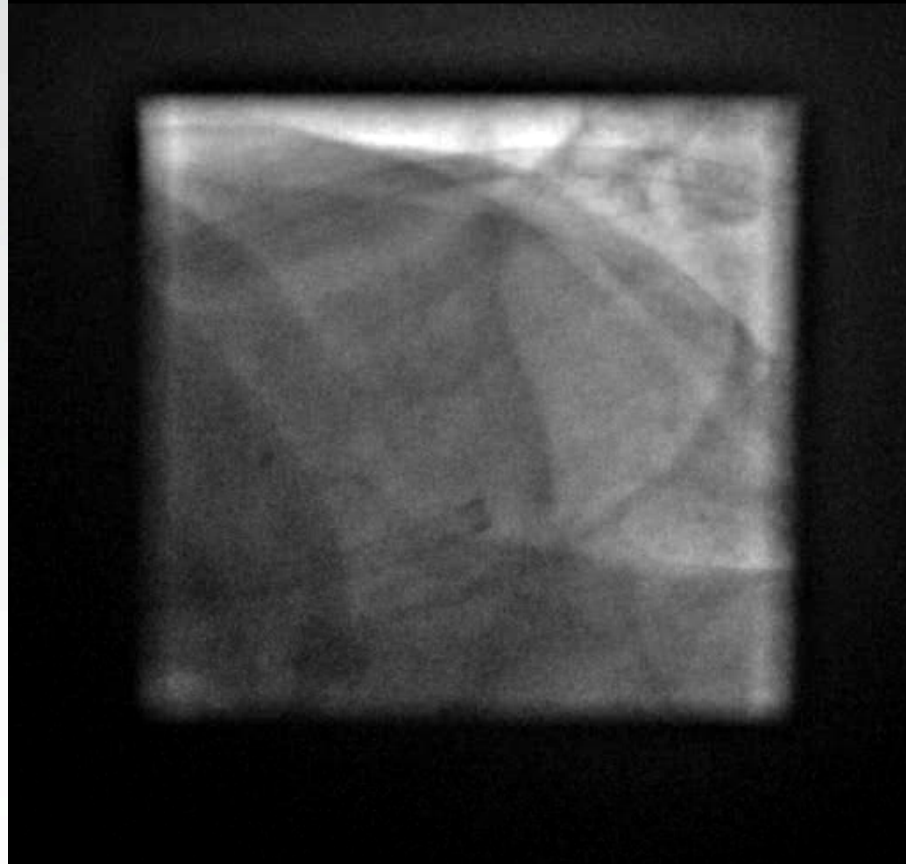


Final Angio

Lossy compression - not intended for diagnosis



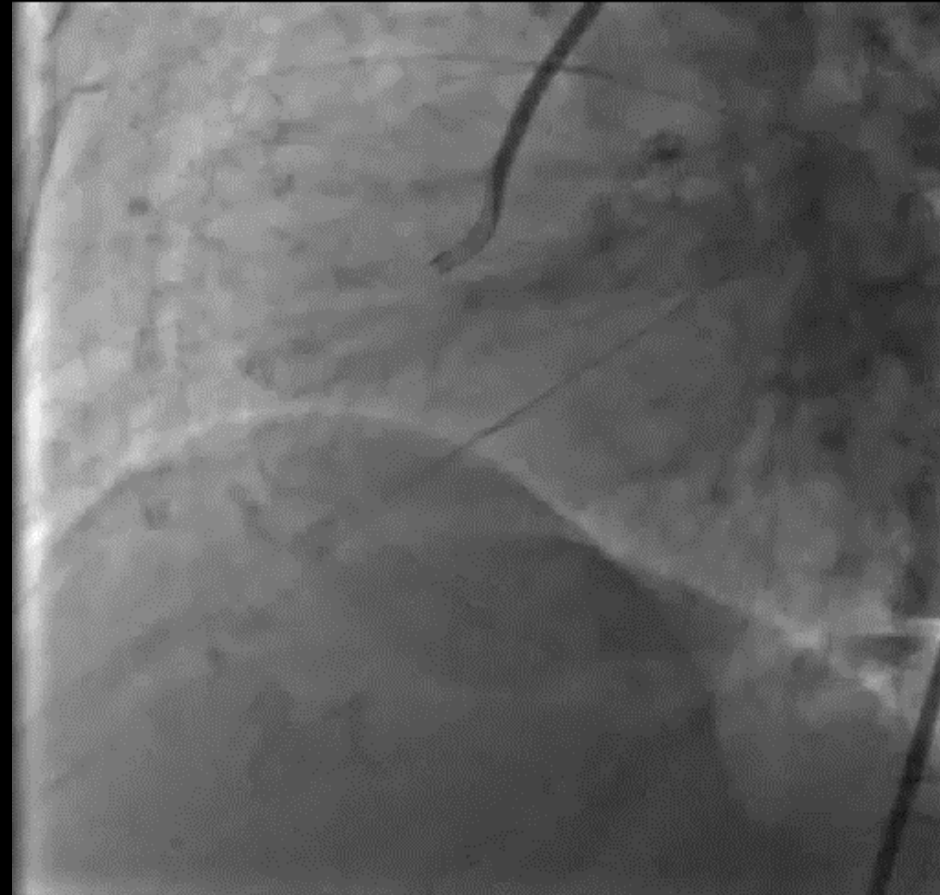
Lossy compression - not intended for diagnosis



PDA Pre and Post



Lossy compression - not intended for diagnosis



Feasibility study - 10 patients

	MD-Bi (Full stenting)	MD-P (Provisional)
	1 year	1 year
TVR	0	0
MACE	0	0
Angiographic restenosis*:		
Mother vessel	0	0
Daughter vessel	2/7	1/3
Carina	0	0

*5/7 have had follow up angiography

Limited study

Further studies are required to establish efficacy

ABS

A simple system designed for the Left Main and large bifurcations

- No new skill-set required
- Conventional sizing based on Murray's/Finet's law
- No wire recrossing
- No additional balloons to complete the procedure
- Evenly scaffolds all bifurcations with automatic alignment
- No gaps, or overlaps
- Highly deliverable with a low crossing leading edge profile

Advanced Bifurcation Systems
Mother-Daughter Platform
full bifurcation and provisional side-branch stenting

Mehran J. Khorsandi, MD, FACP, FACC, FSCAI
Cedars-Sinai Heart Institute

Thank You