



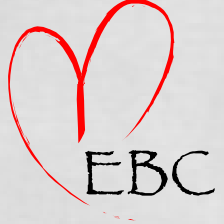
# An Ostial LAD Lesion 0,1,0

To Kiss or Not to Kiss?  
Helen Routledge  
University Hospital Birmingham

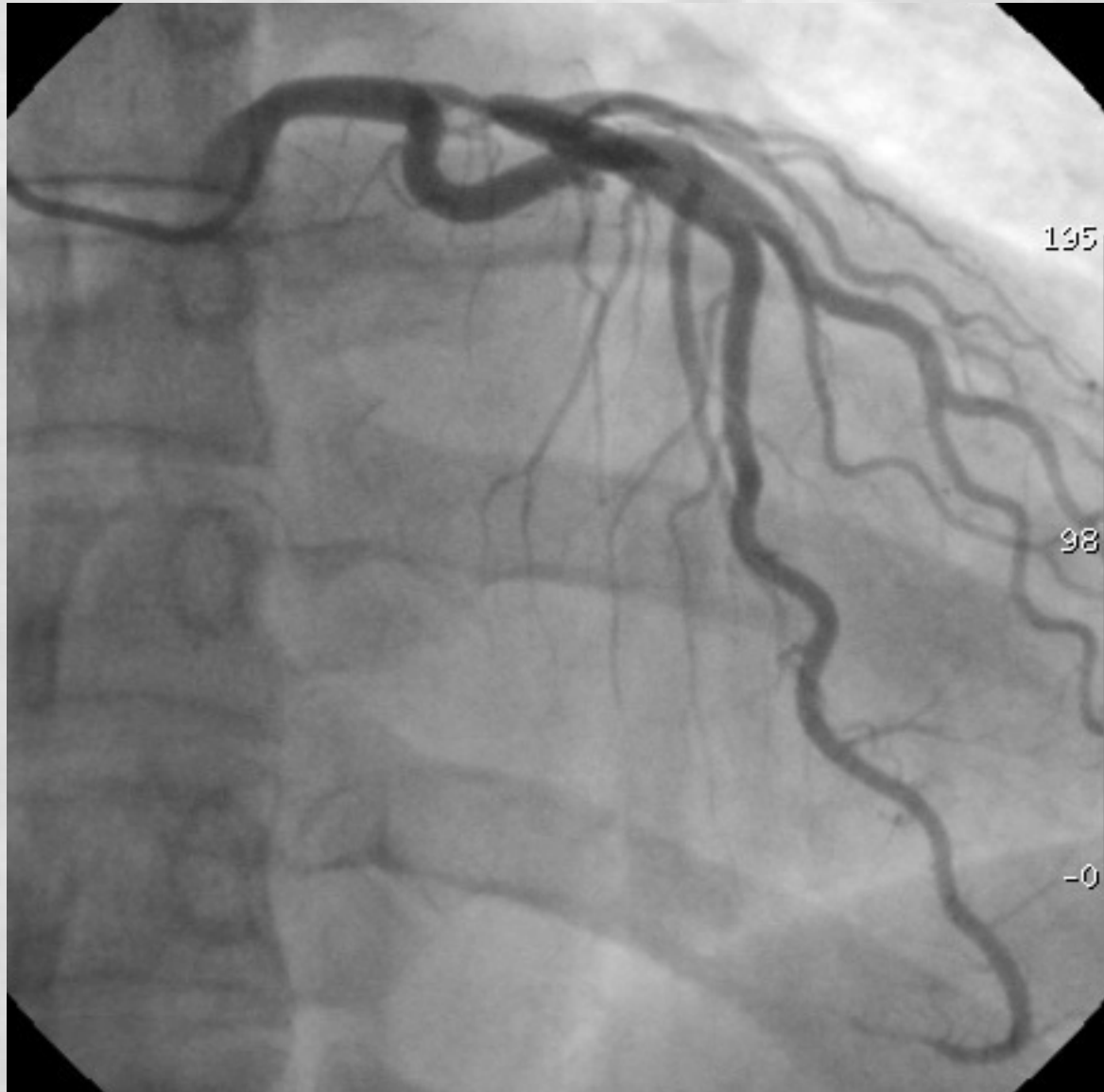


# 40 year old Female

- Fit and healthy
- No cardiovascular risk factors
- Atypical chest pains
- Exercise test: Early positive !
- Perfusion scan: Anterior wall ischaemia
- Normal LV size and function
- Angiography -
  - RCA normal
  - LCA...



# Angiography Jan 08





# Angiography Jan 08





# IVUS Jan 08

Demonstrates the lesion extends all the way back to the ostium, with minor atheroma in LMS

**(images not included in email version!)**



# Q1. Ostial LAD - Strategy?

1. Ostial LAD stent?
2. Provisional SB T stent? - Gp A
  - 1 wire or 2?
  - Kissing or not?
  - Criteria for second stent?
3. Elective 2 stent strategy?
  - Elective T / TAP
  - Culotte /Crush
4. CABG?



## 6 Months later....

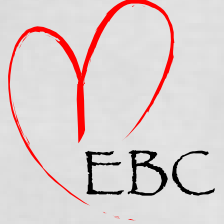
- Patient is well, but occasional atypical chest pains...
- Control Angiogram.....

Q1: Which PCI strategy do you think was used 6 months ago?



# July 08 : Control Angiography





# July 08: Control Angiography





# July 08: Control Angiography





# July 08: Control IVUS

- Stent is well deployed in distal LMS and LAD
- No neointimal hyperplasia within Endeavour

(IVUS Images not included in email version)



## Q2. So why the Cx problem?

- **Is it because we used a 2 stent strategy? -**
  - Restenosis in a side branch stent
  - T- stent - “the SB ostium is never covered”
  - Crush without a kiss
- **Is it the result of a provisional strategy? -**
  - Because we did a kiss – balloon injury?
  - Because we didn't do a kiss ?
- **Is it a problem with a single stent strategy -**
  - Plaque shift - there at the end of the case?



# So which strategy had been used?

"A" - provisional:

- ✓ 2 wires (+ a diagonal wire)
- ✓ Single DES: LAD back into LMS: Endeavour 4mm
- Not re-crossed
- Not Kissed
- ✓ Final IVUS and post dilatation 4.5mm NC balloon

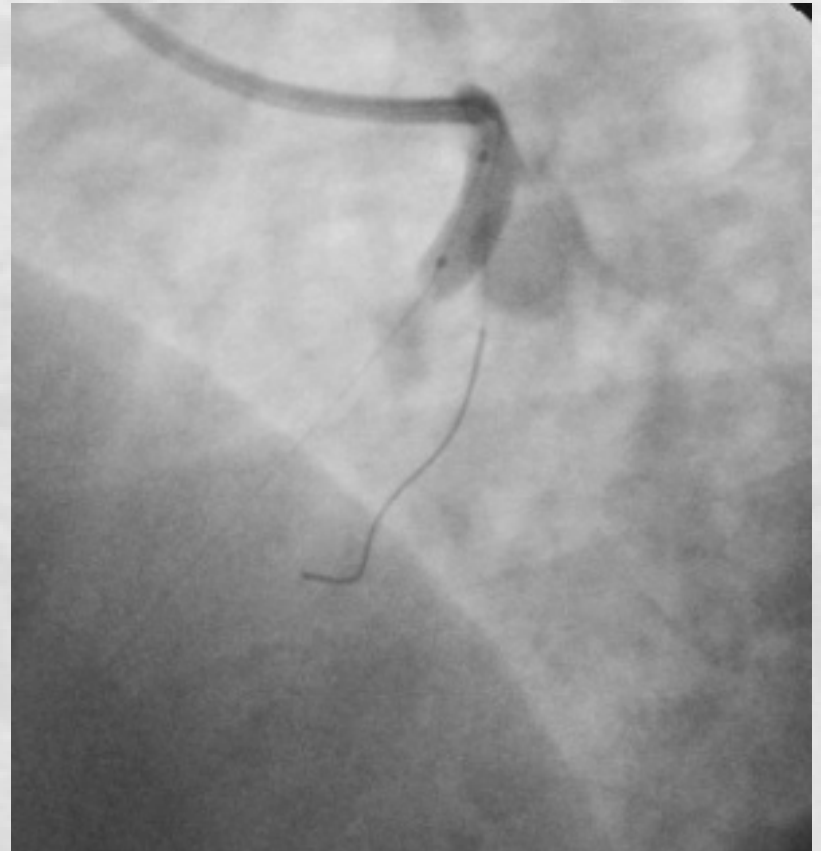
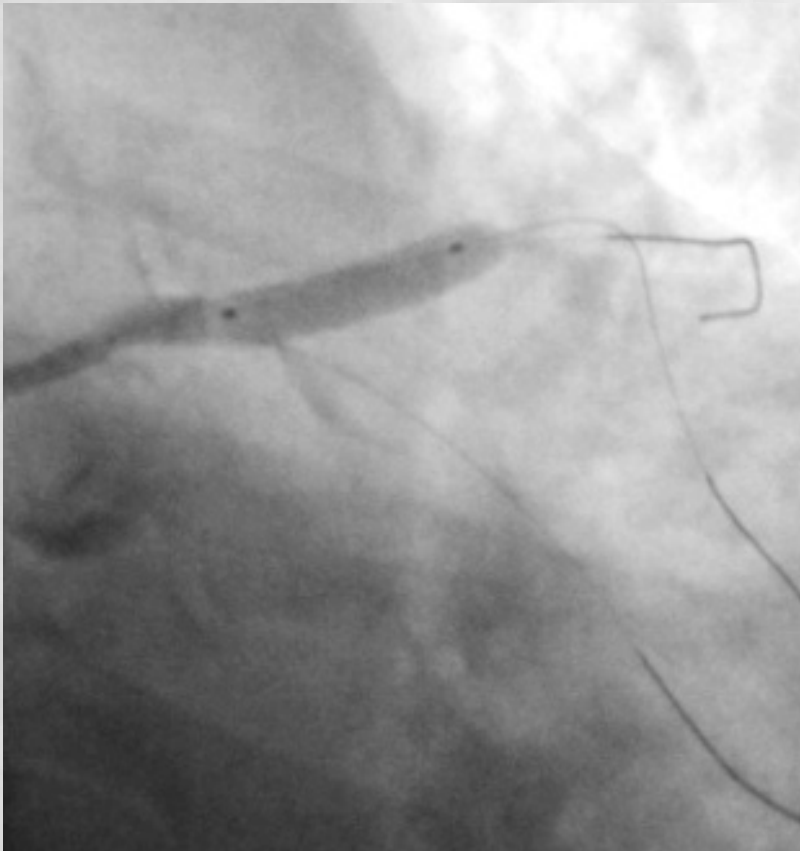


# PCI Jan 08: Stent Position

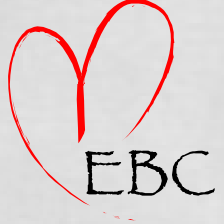




# PCI Jan 08 - Deployment

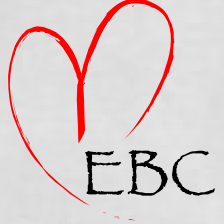


Slipped back on deployment



# PCI Jan 08 - Stent Result





# After IVUS and post dilatation





# Q3. What would you have done differently?



- Stent just the LAD ostium?
- Final Kissing?
- 2 Stents
- CABG

## Q4: What now?



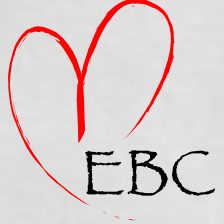
- ✓ ETT positive at 3 minutes



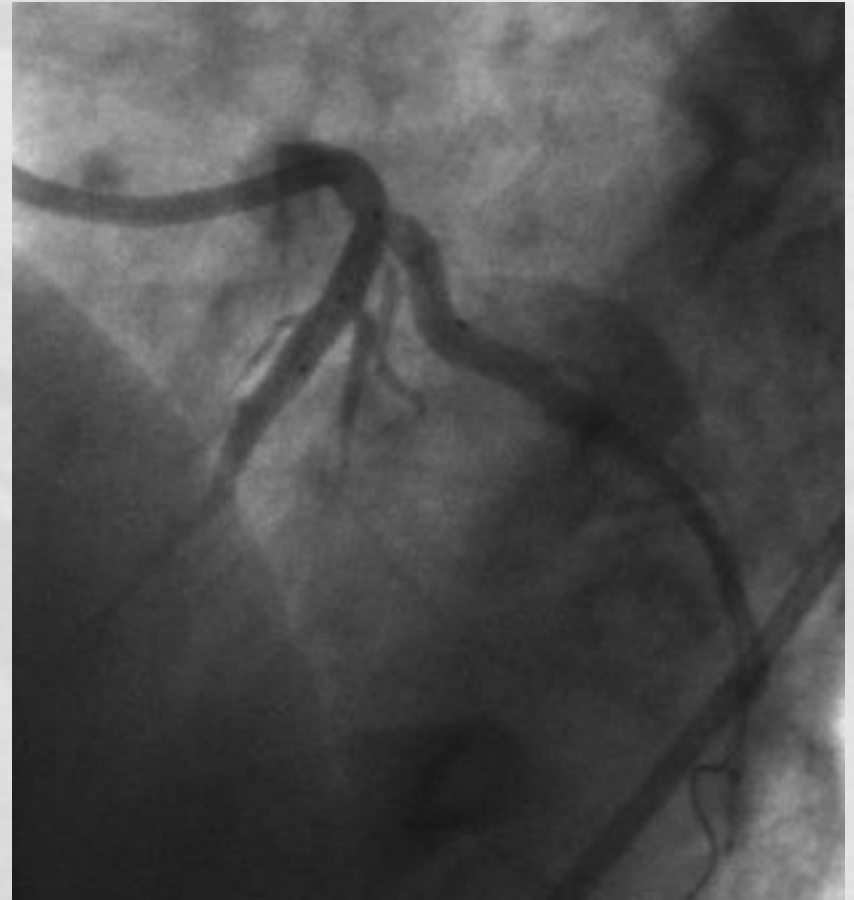
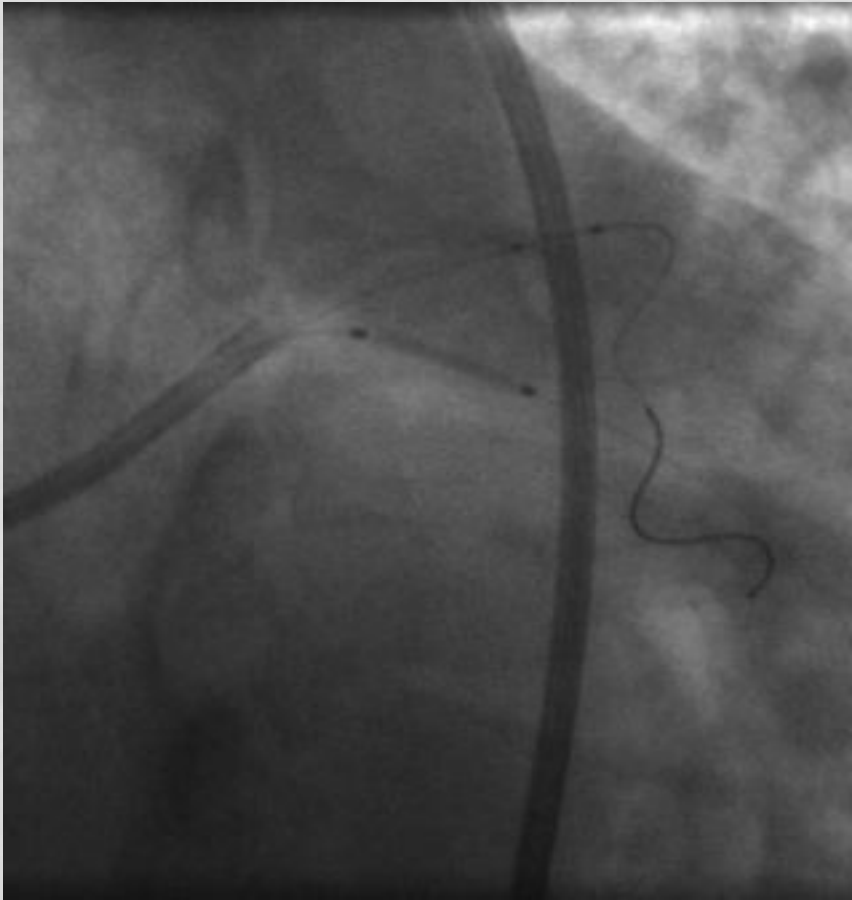
# July 08: PCI to Ostial Cx

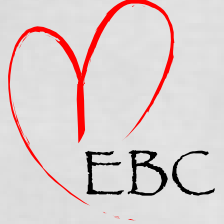


- 2 wires
- Predilate Cx
- Balloon in LAD
- Stent to Cx
- Balloon LAD
- IVUS

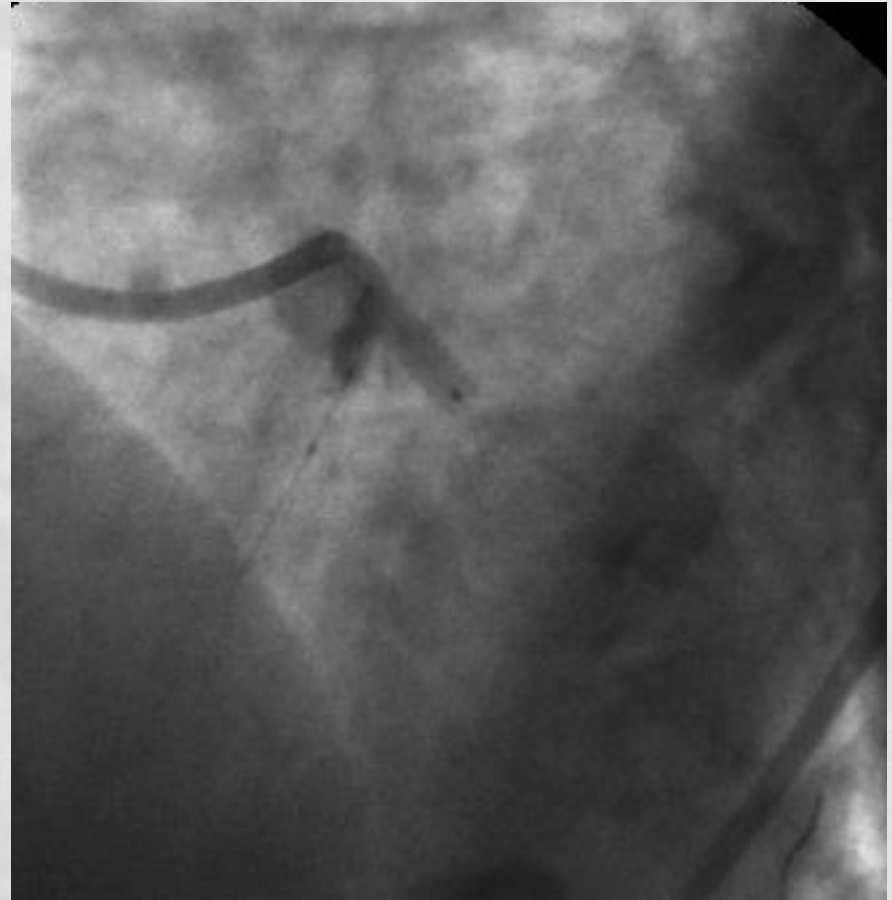
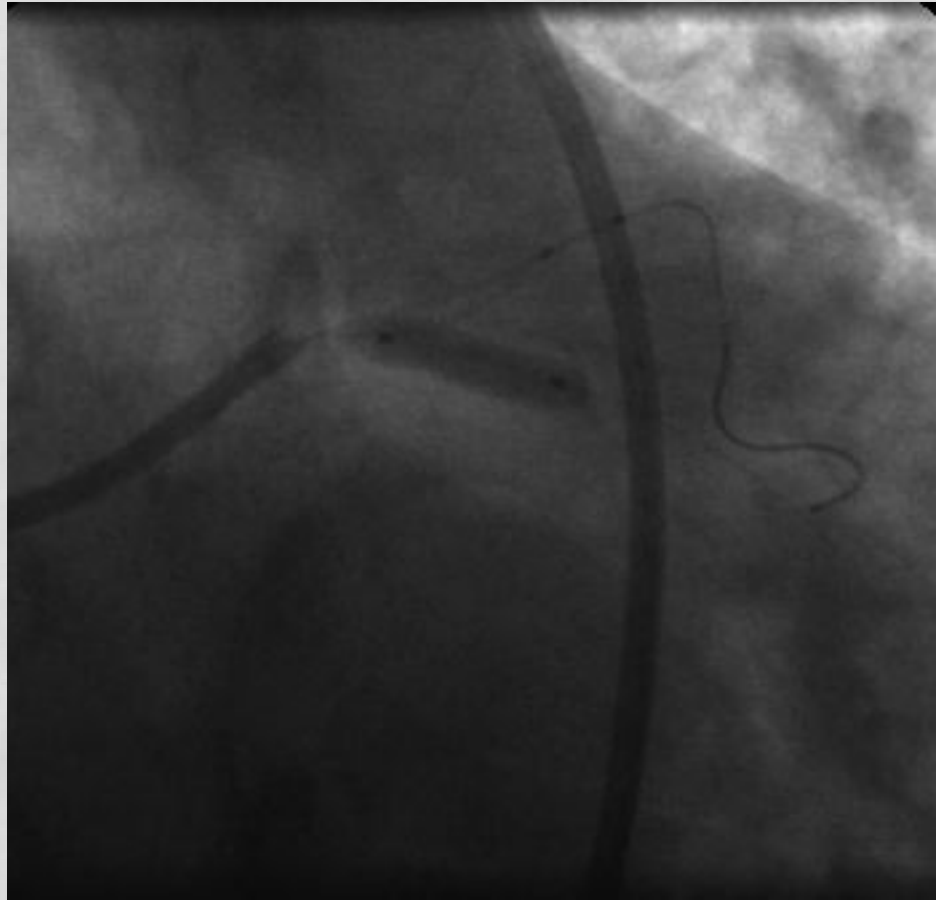


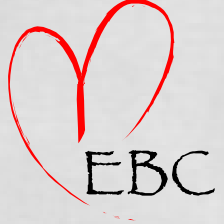
# July 08: PCI to Ostial Cx



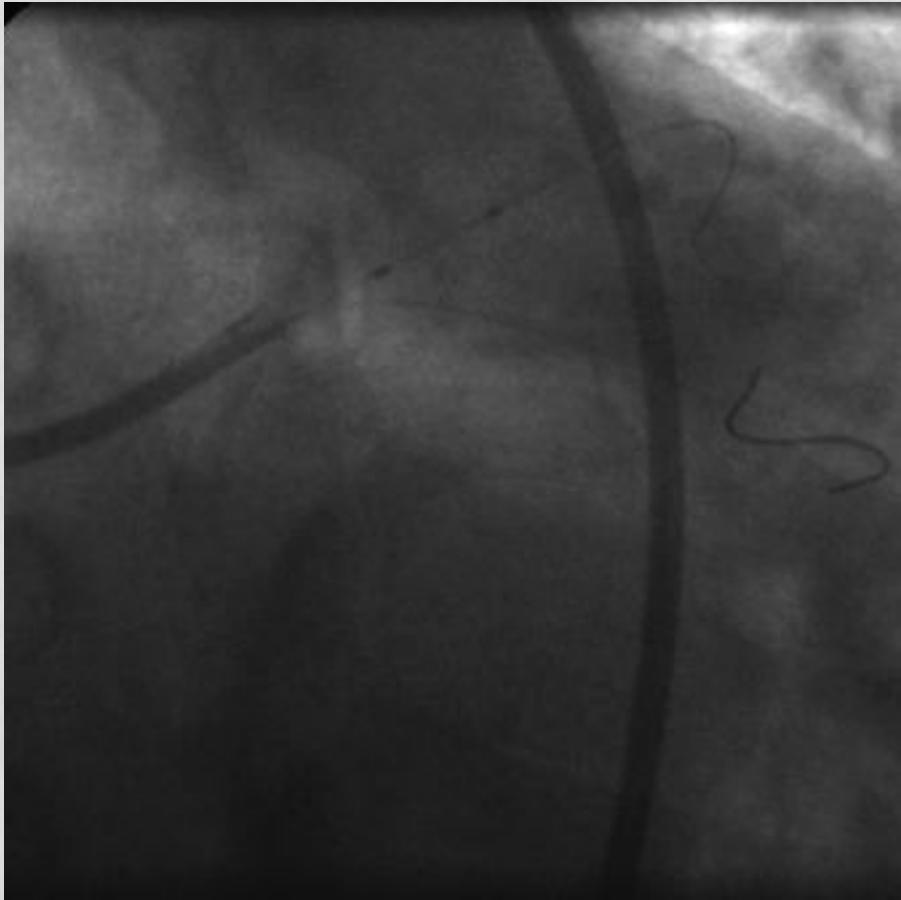


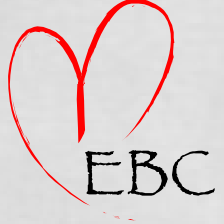
# July 08: PCI to Ostial Cx





# July 08: PCI to Ostial Cx





# July 08: PCI to Ostial Cx

