

A photograph of the entrance to the Worcestershire Royal Hospital. The building features a large glass facade with a white metal frame. A blue sign with white text reads "Worcestershire Royal Hospital". The entrance is covered by a white canopy supported by white columns. Several people are visible near the entrance, and a white ambulance is parked on the right. The sky is blue with some clouds.

Worcestershire Royal Hospital

Shotgunand again

Helen Routledge

Worcestershire Royal Hospital

Friday 18h : MC 86 F

- Retrosternal chest pain
- No cardiac History
- Main carer for husband
- HTN / DM (diet)

- LAD syndrome on ECG
- Troponin 3864
- Frail
- Episode of AF on admission
- On table echo – mild AS / LV OK

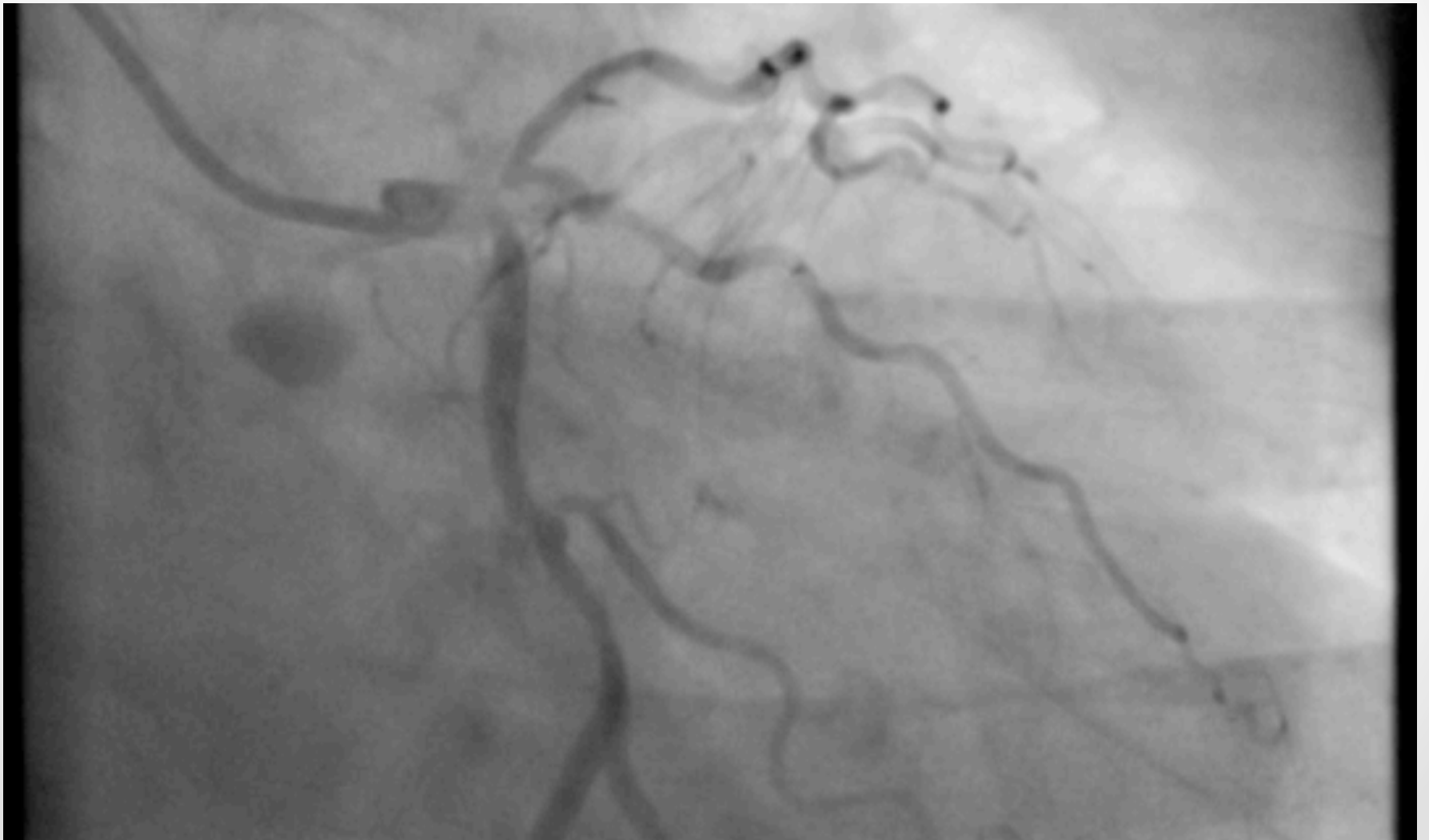








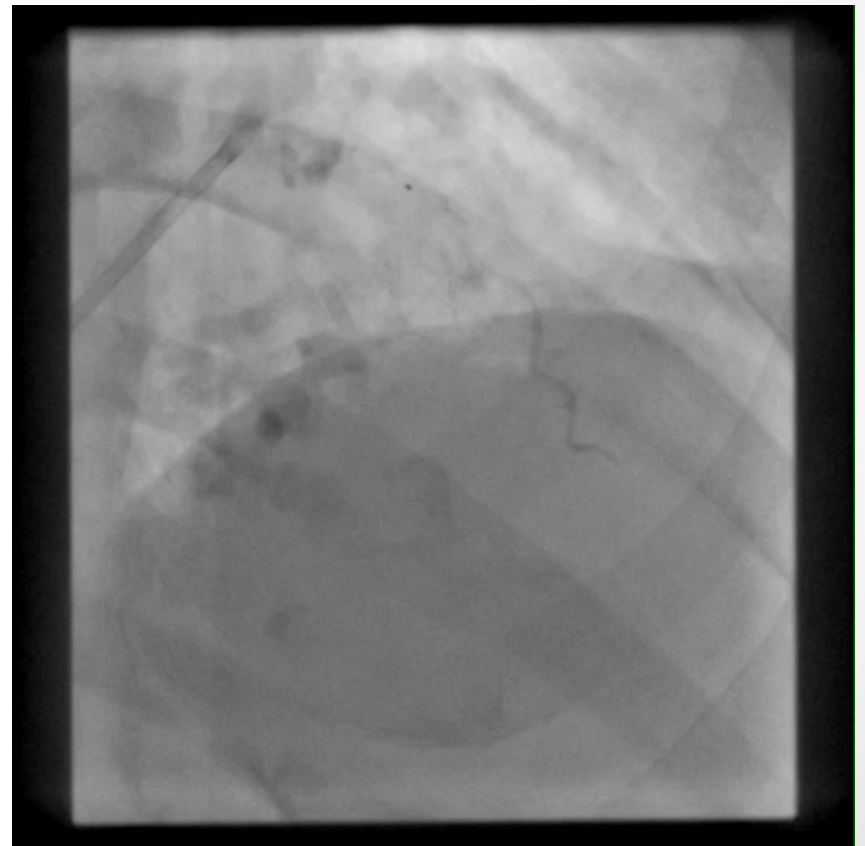
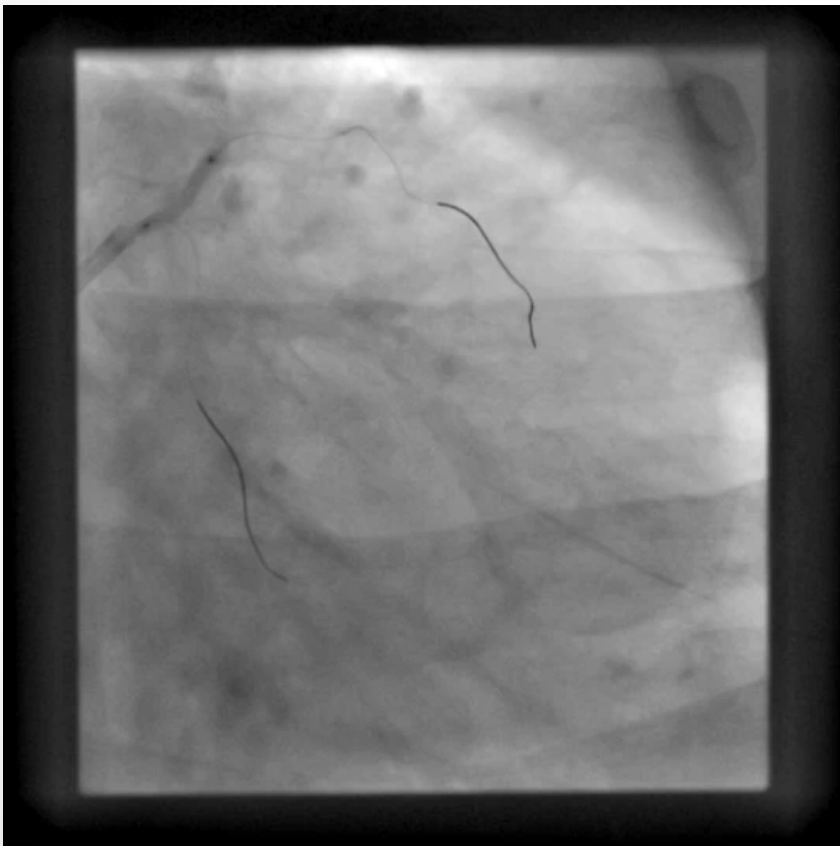
Strategy? – PCI? / Do something to the
RCA ? / Rotablate ? / Call a friend....?

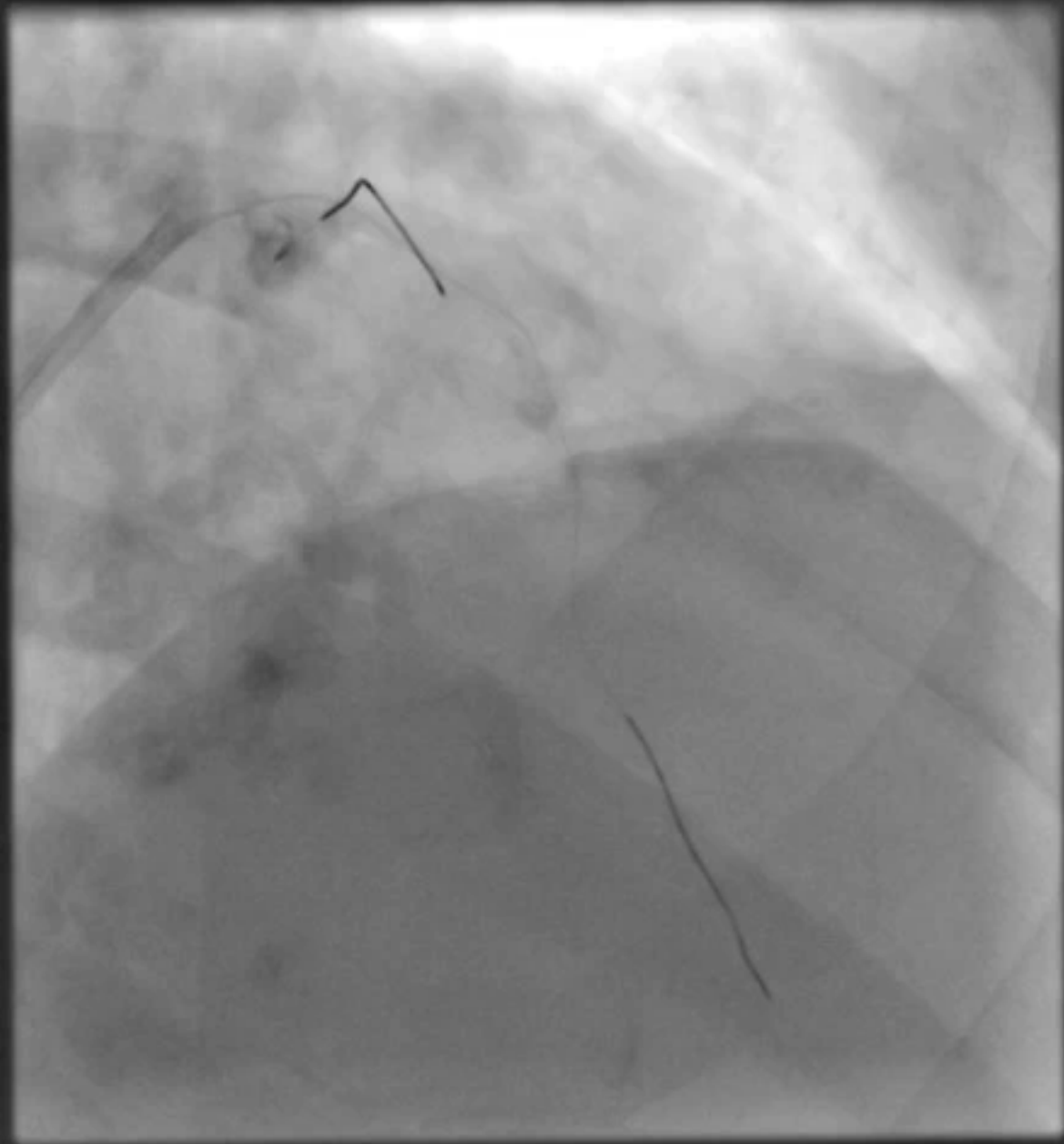


Strategy? – PCI LMS /Rotablate / Call a friend / 7F guide



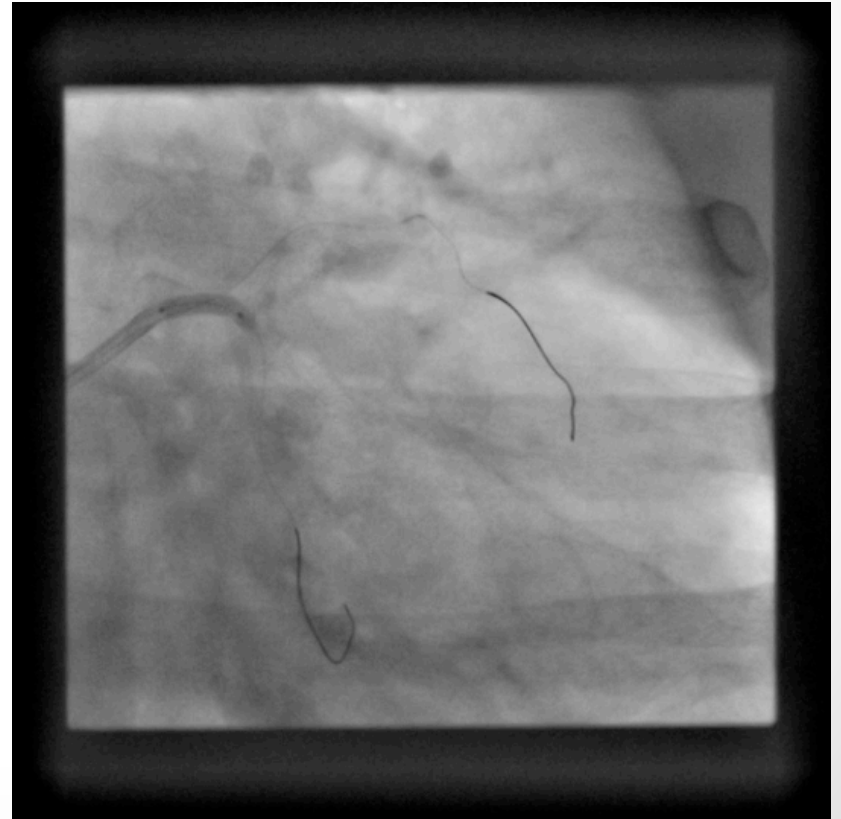
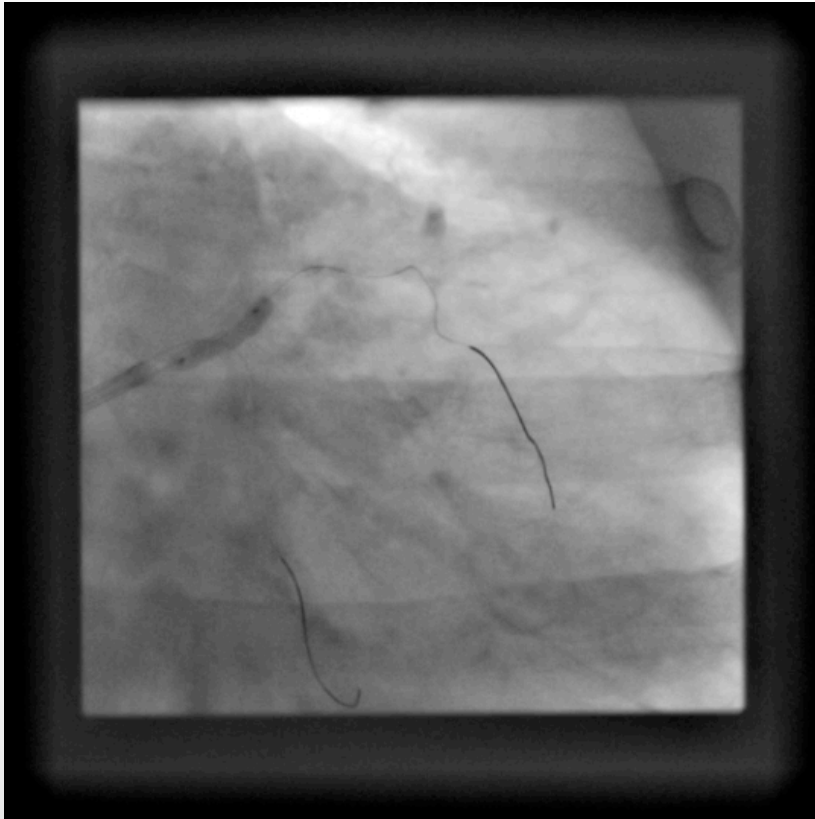
Mid LAD dissection, wire Cx – She is unhappy, try to avoid rotablation....



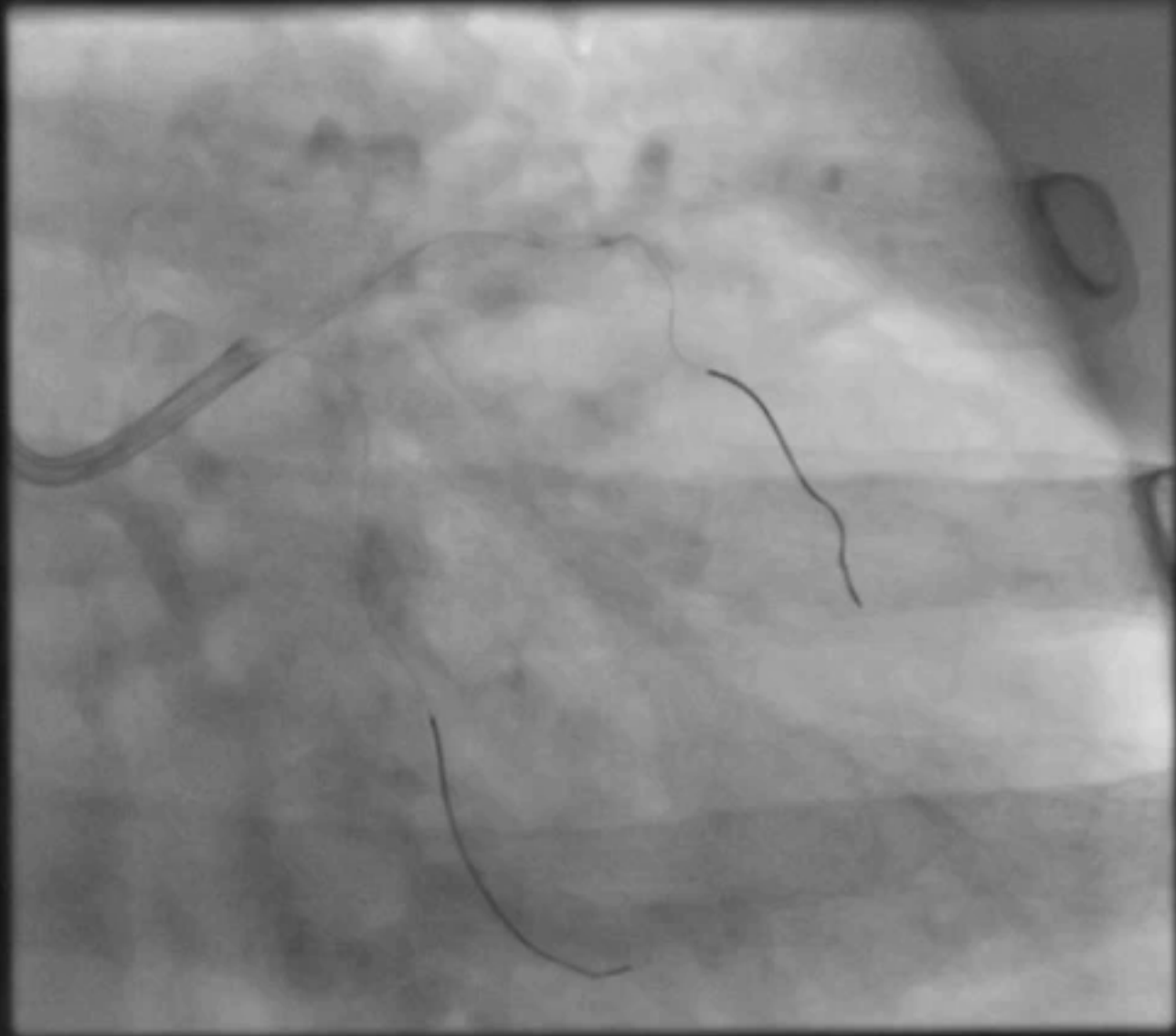


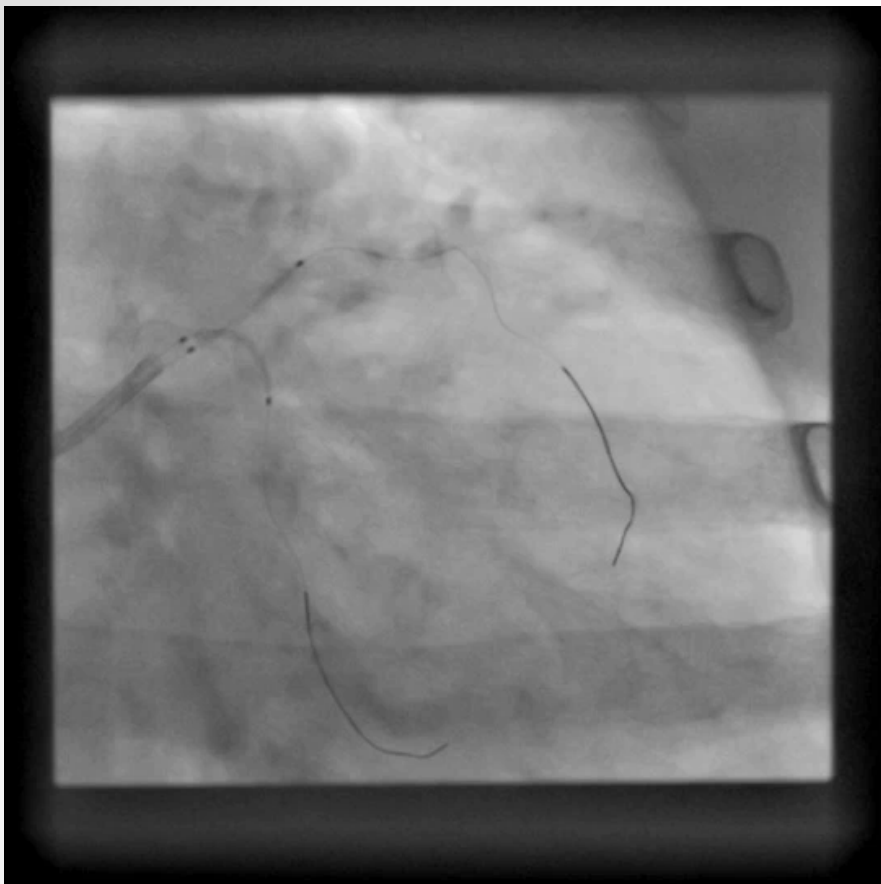
Plan B + Strategy

- Serial dilatation: Make plenty of space
- Shotgun - as safe and quick as possible

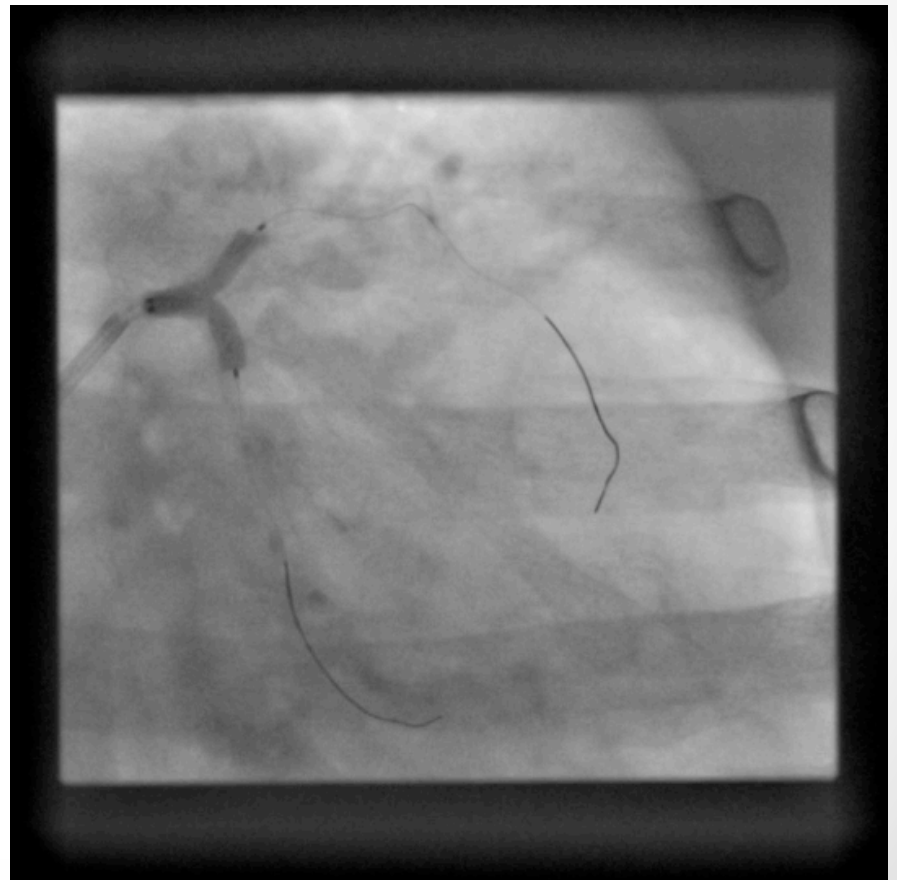


•

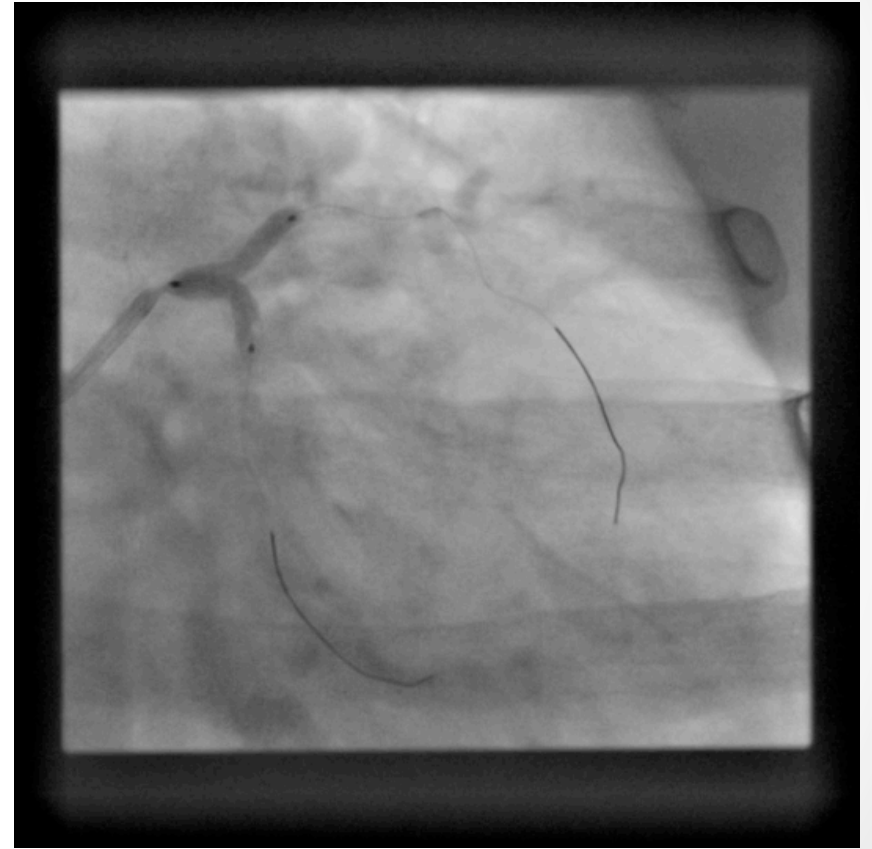
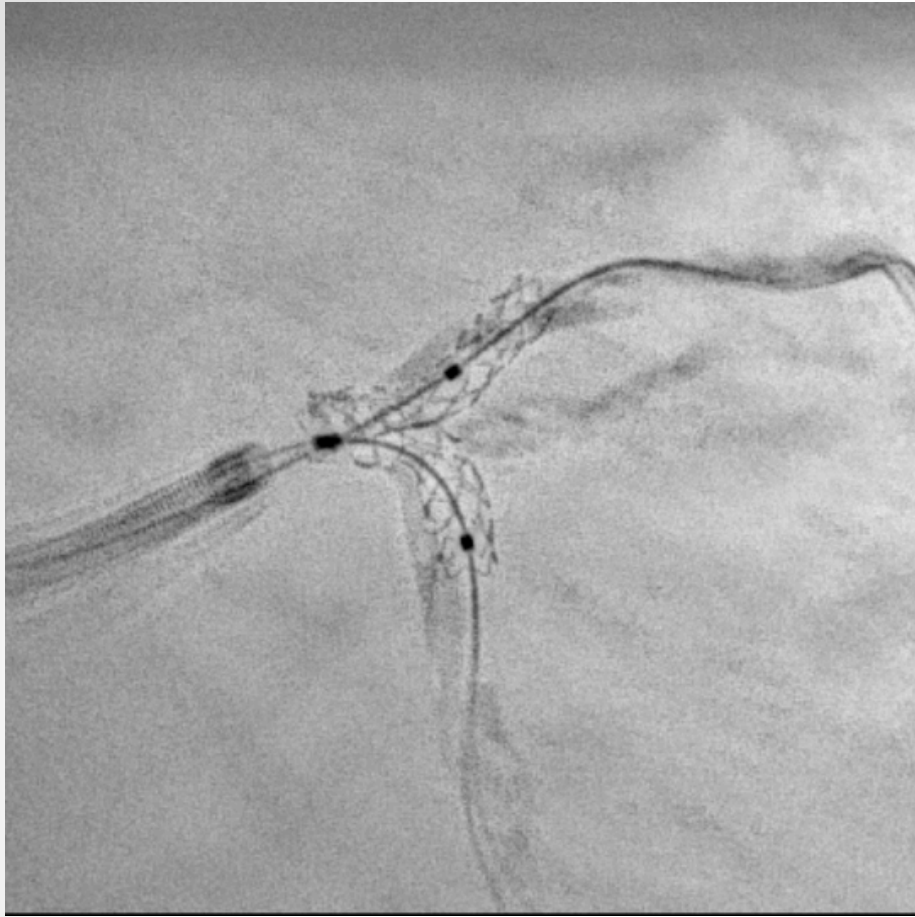




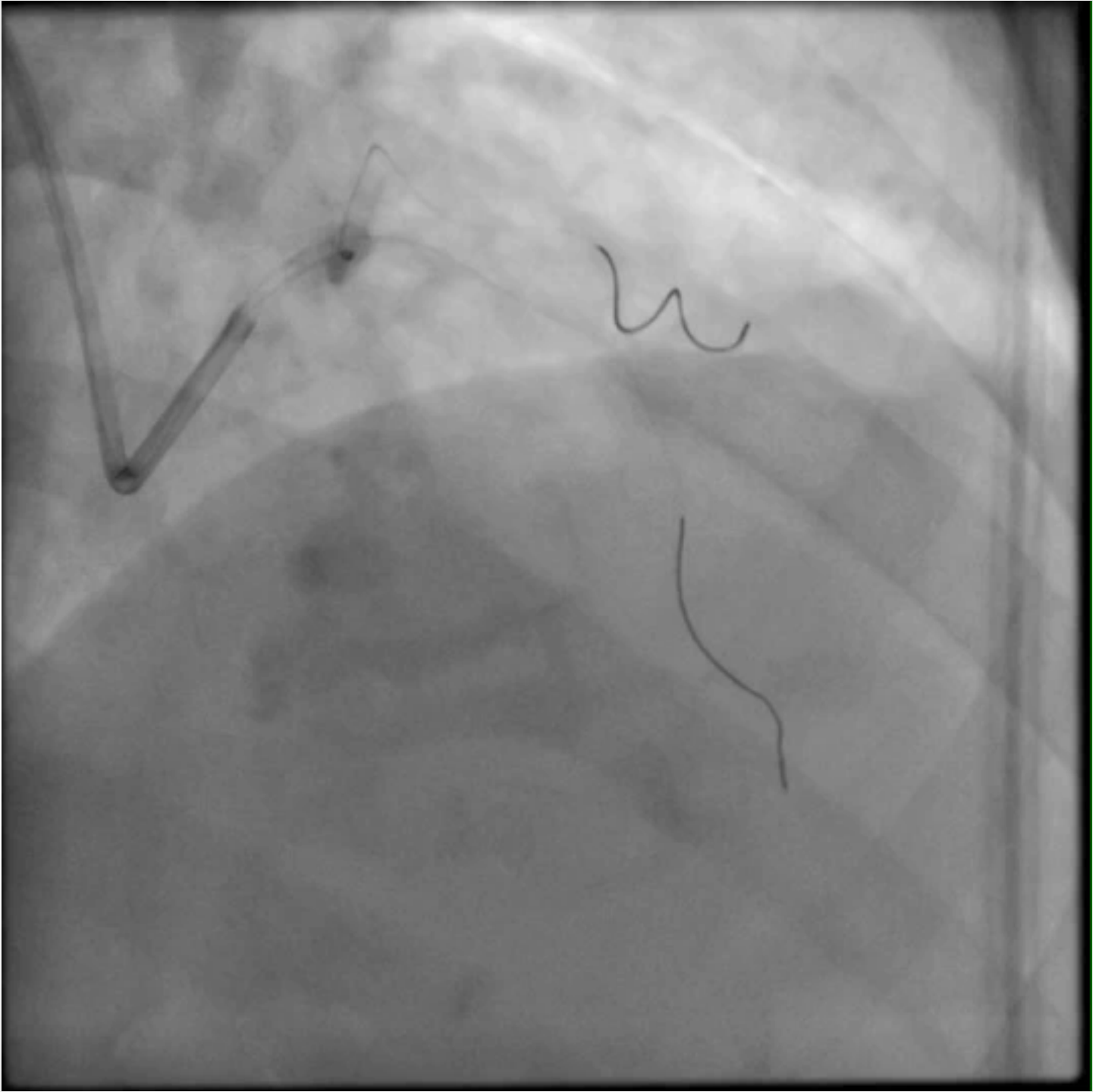
Biofreedom 2.75 x 15mm -LAD
Biofreedom 3 x 15mm - LCx



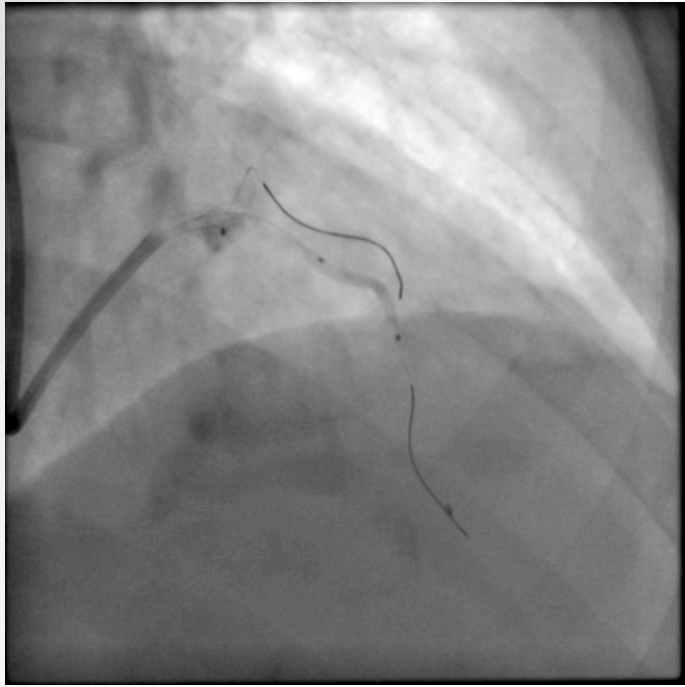
18 Ats
18 secs



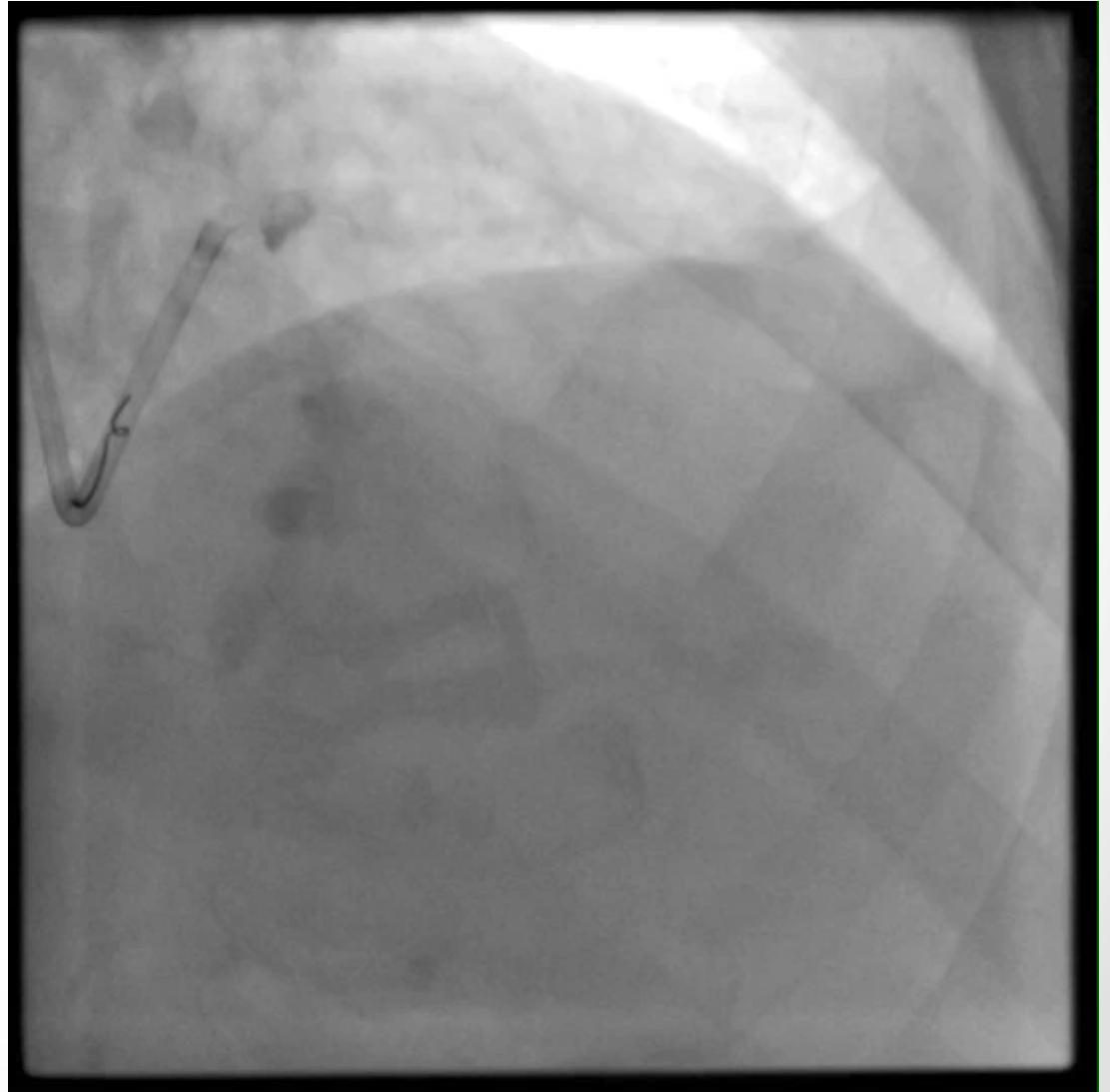
2.75 X 8 / 3.25 X 12 NC – 20 ATS



Dissected LAD



Ryujun 2 x 20mm
Long inflation



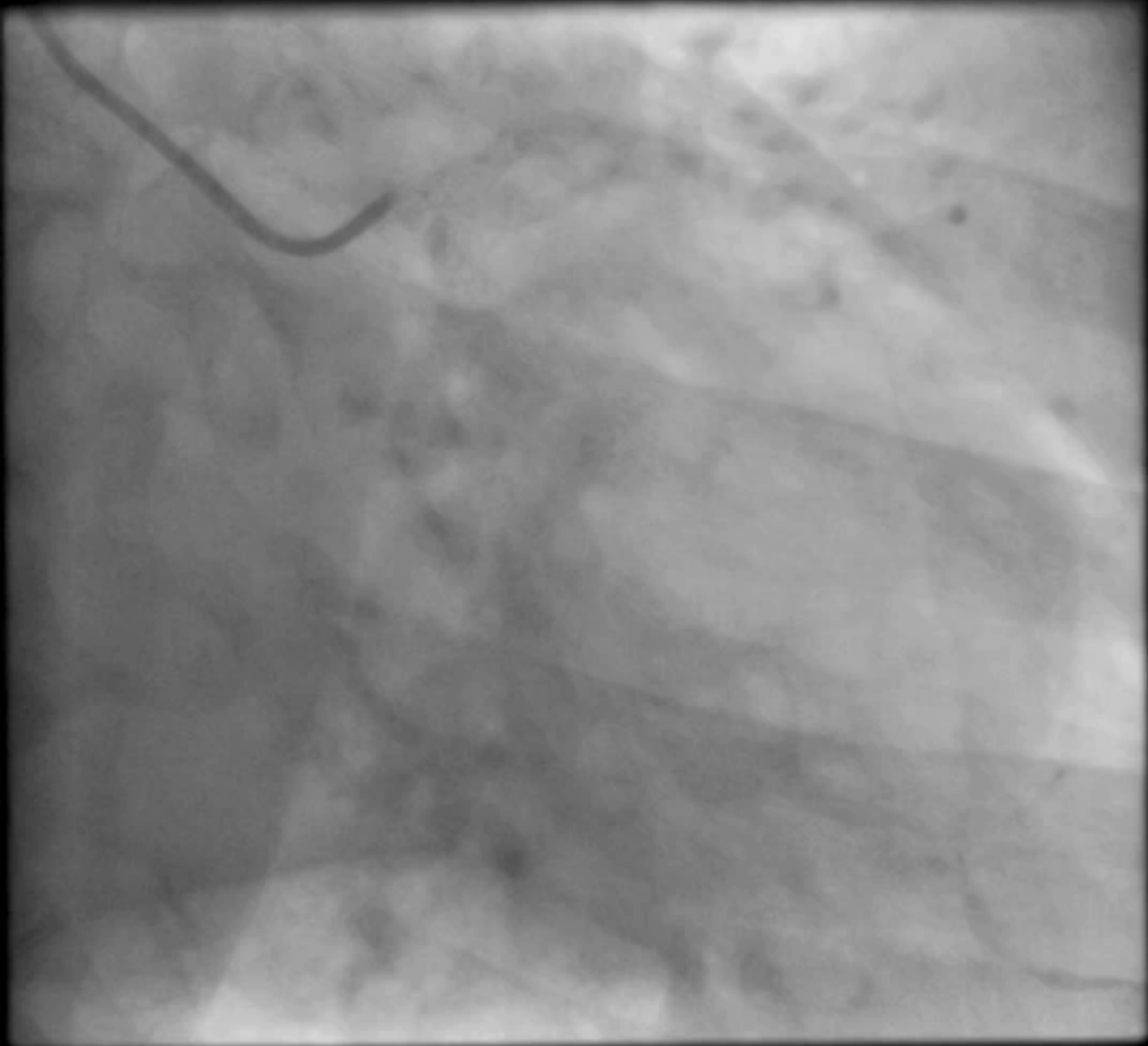


The end?!

- Still lots of pain
- ECG fine
- Stays over weekend

5 months later...

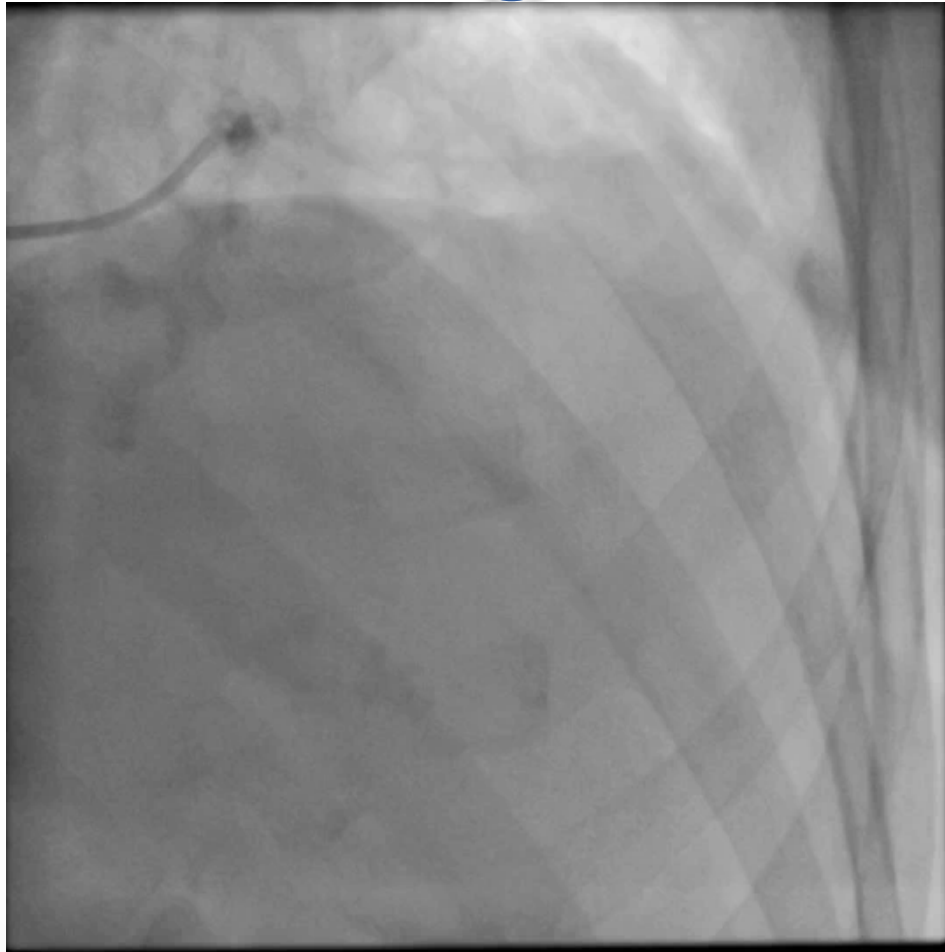
- Few hours of chest pain
- Not as bad as last time
- New LBBB
- Troponin 654 – 1558
- Not taken as PPCI on thursdsay night
- (Settled with GTN)
- Back on my Friday list...



Oh No – that's why I
never Shotgun!



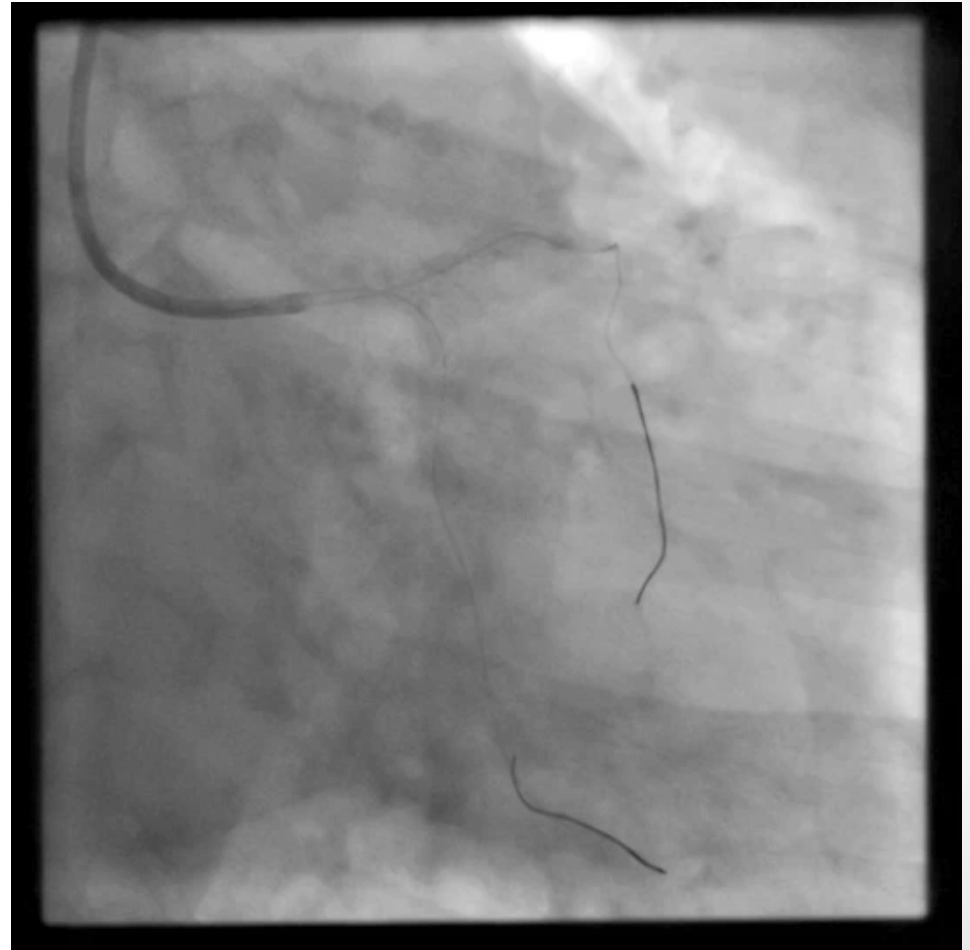
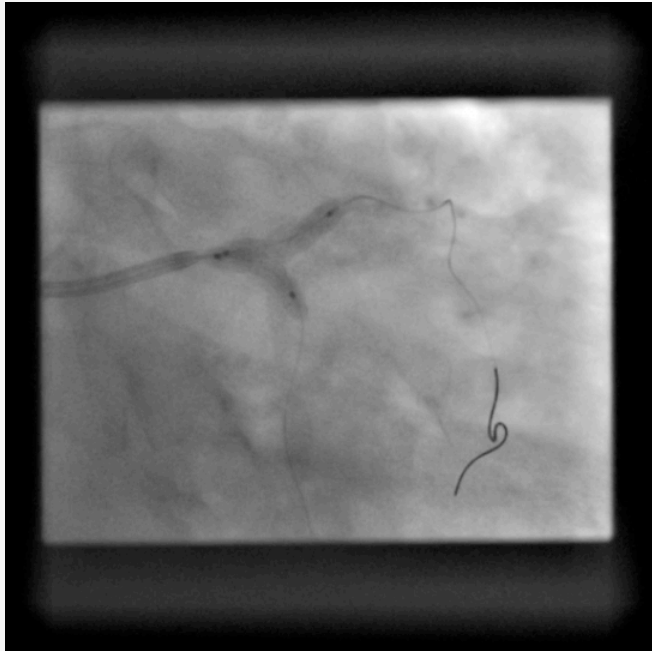
LAD healed up Ok though...



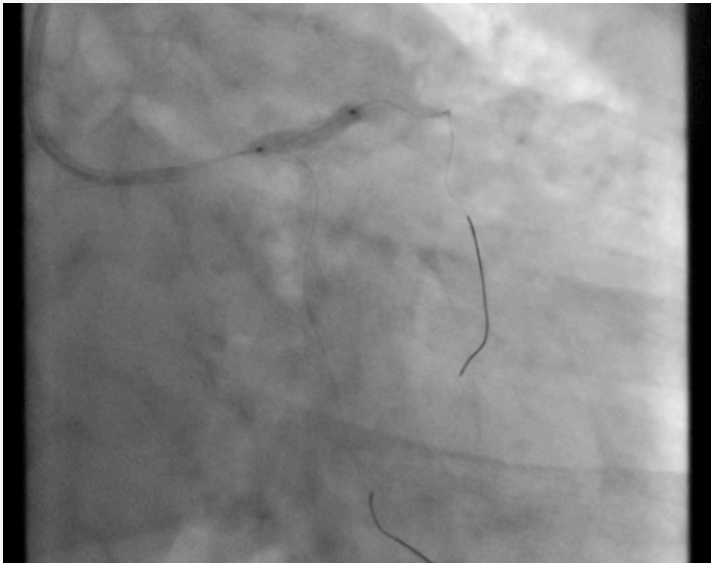
Guidewires sailed into LAD and Cx!



Kissing to 3.25 & 3.0 NC



DCB to LAD 10 ats -20 secs



CARDIAC ARREST

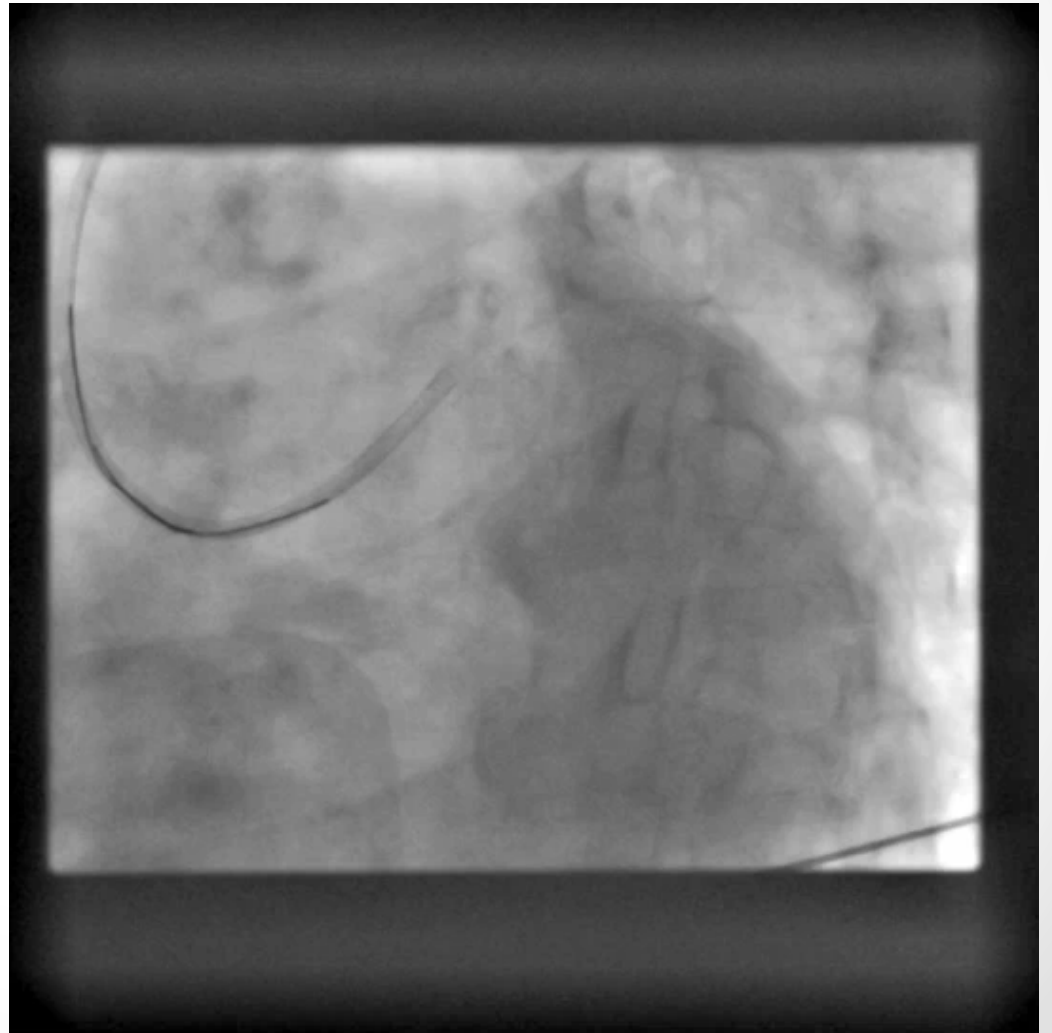
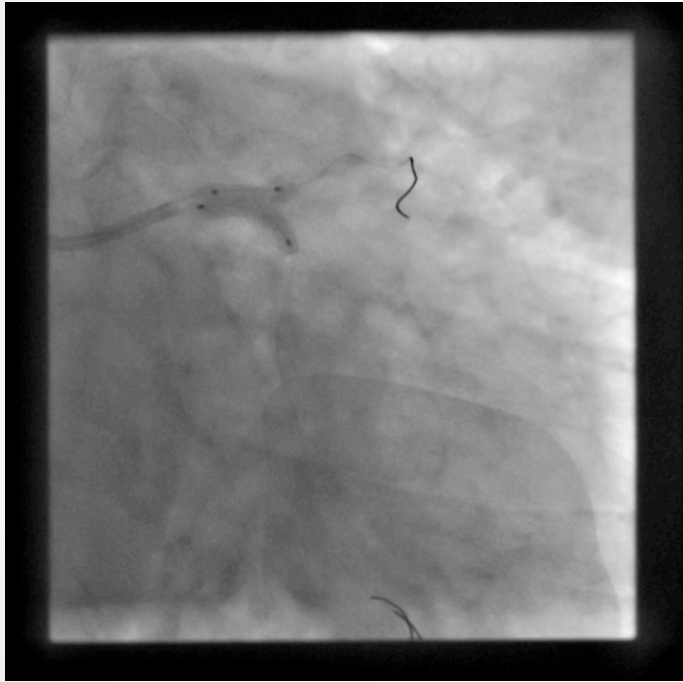
ASYSTOLE – 1 MIN CPR

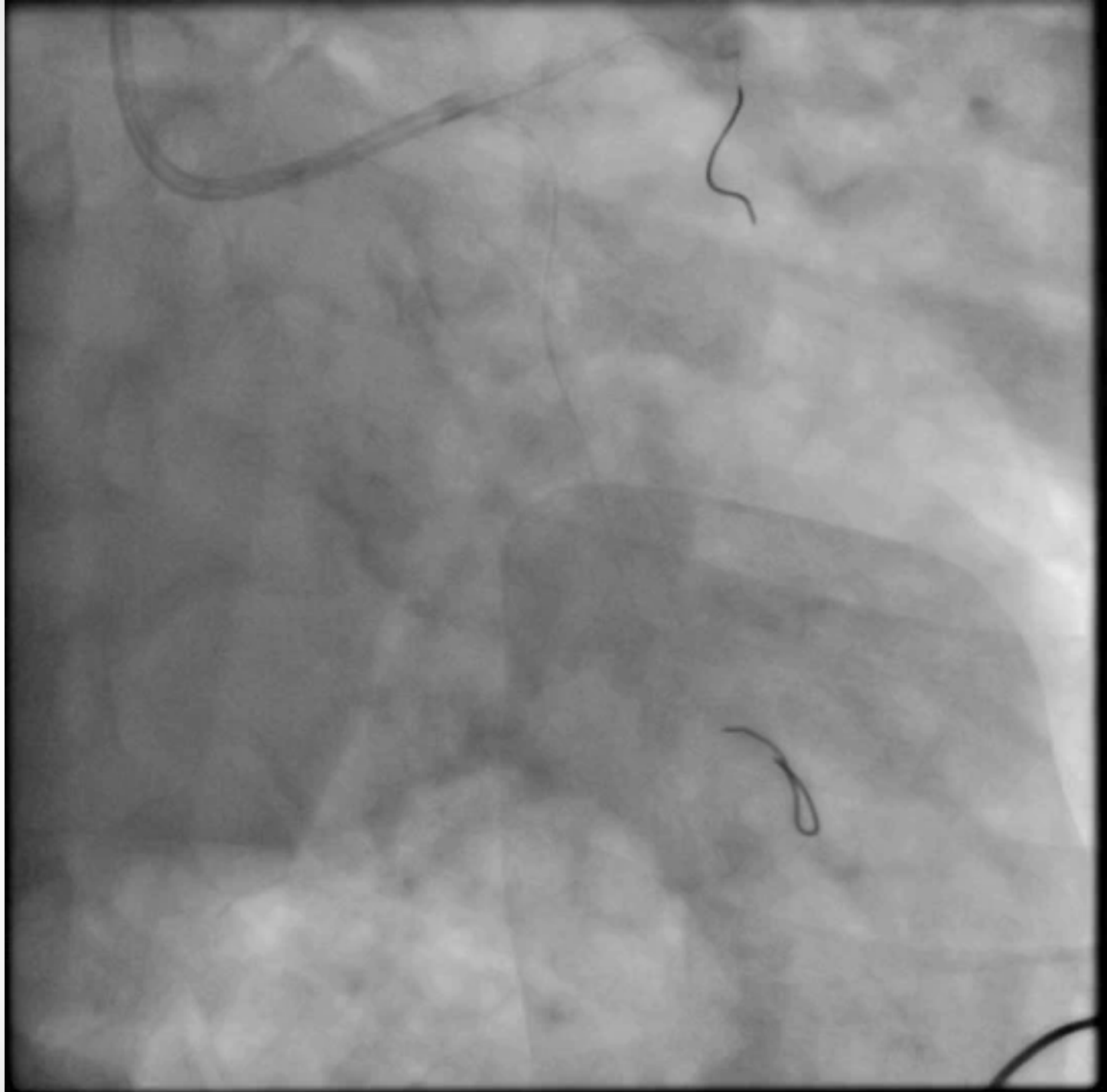
? CIRC OCCLUSION

LOOKS FINE

RPEEAT KISS

DCB to LCX with NC balloon in LAD





Clinic 2 months later...

- Well – climbing stairs
- Caring for husband
- Aspirin and Clopidogrel changed to Rivaroxaban and Clopidogrel
-Alls well that ends well

11 months later...

- Chest pain
- Minor Troponin rise
- Thursday list
-
- She doesn't fancy it again thank you.
- And nor do I.

