

Friday: 1505-Rab

Complete Revascularization with ROTA

**Tanveer Rab, MD
Professor of Medicine
Interventional Cardiology
Emory University School of Medicine
Atlanta, Georgia, USA**

Patient Demographics

Age: 80
Gender: Male

Clinical Presentation

ACS/NSTEMI

Risk Factors

Age
CKD
Diabetes, on Insulin
Hyperlipidemia

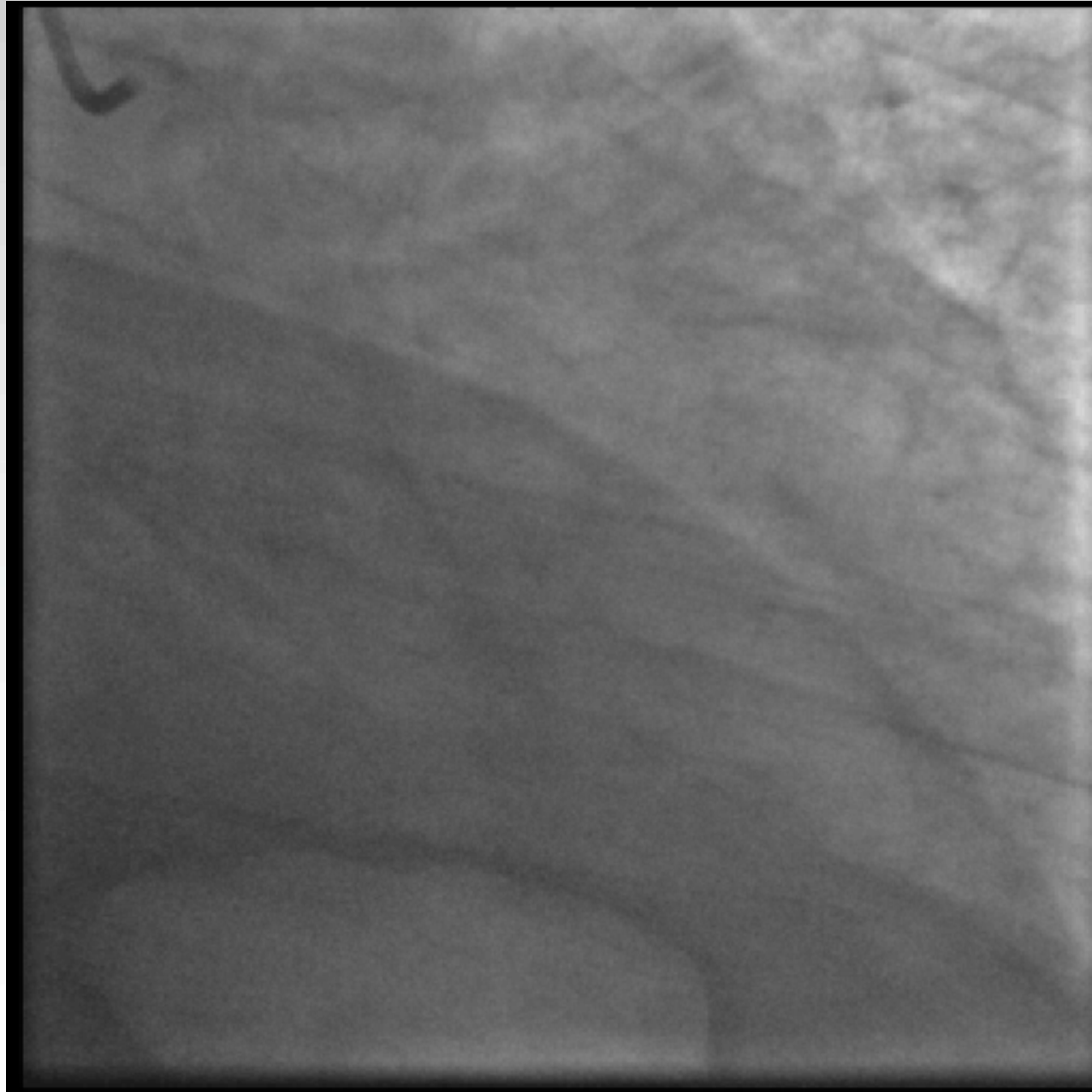
Clinical Variables

Troponin I: 55
Creatinine: 5.1
Hgb: 7.7
Platelets: 192,000
LVEF (angio): 30 %
LVEDP: 22

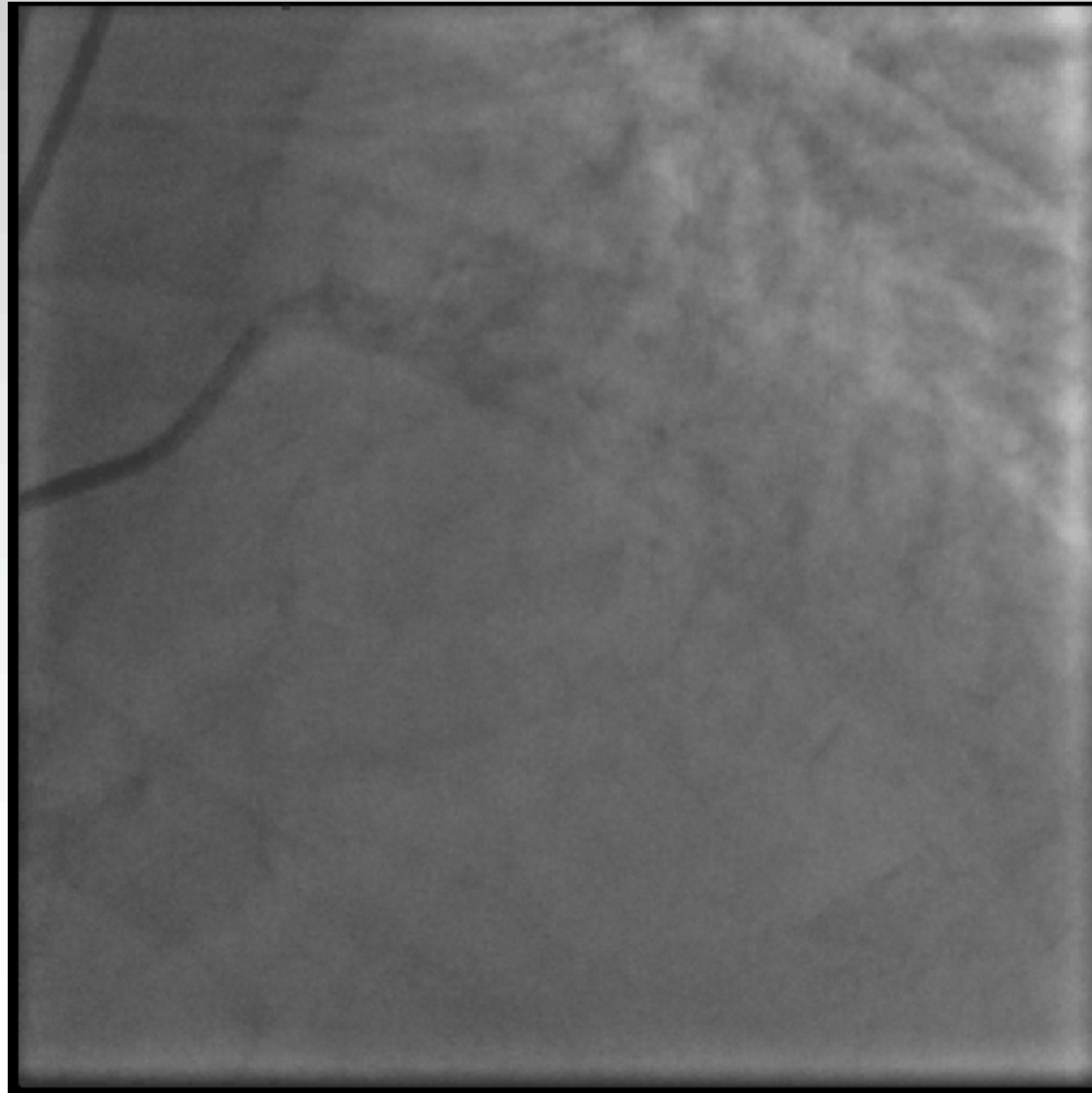
TTE

EF: 30 %
Severe MR

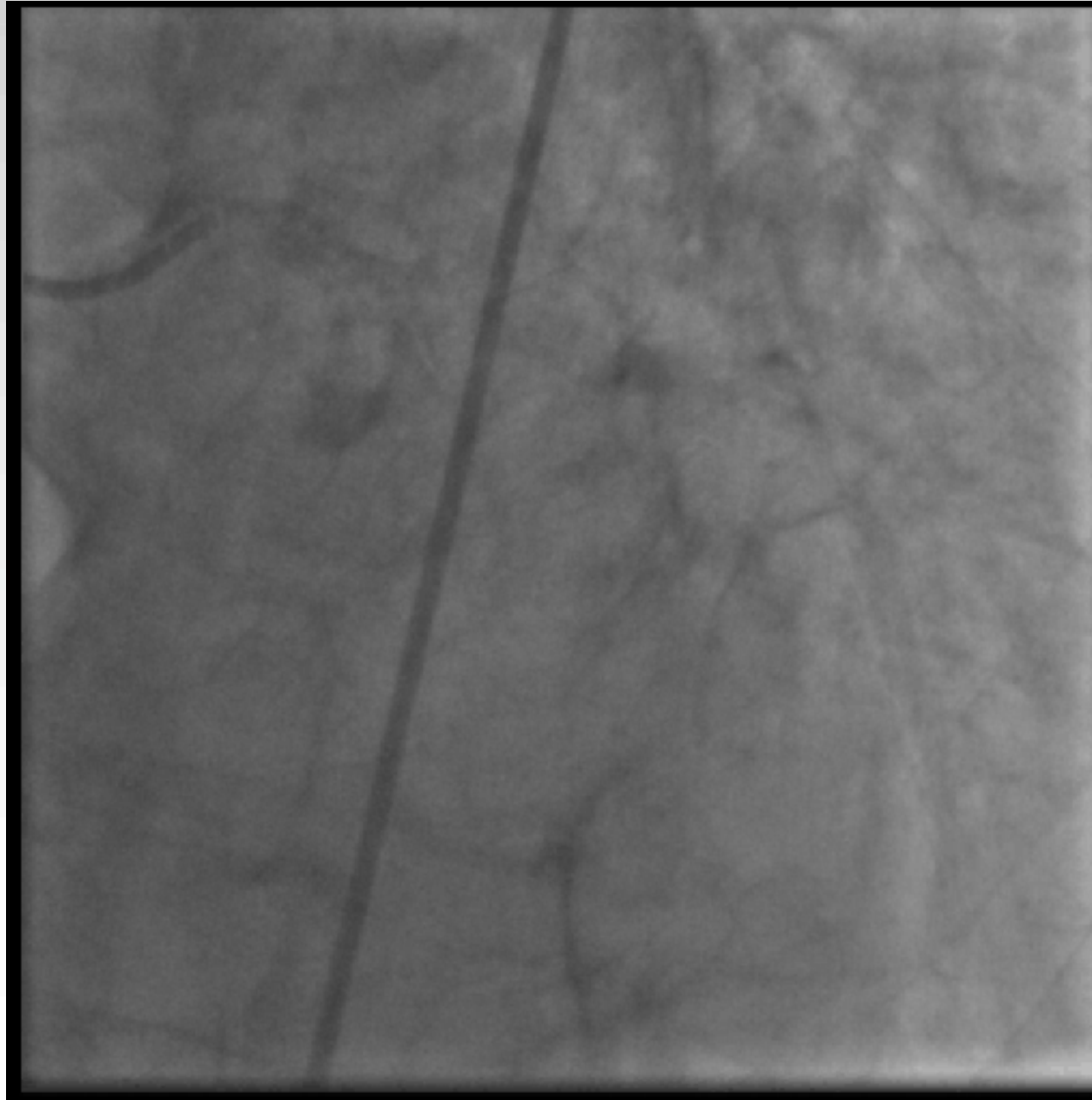
LCA-RAO caudal view



LCA-AP cranial view



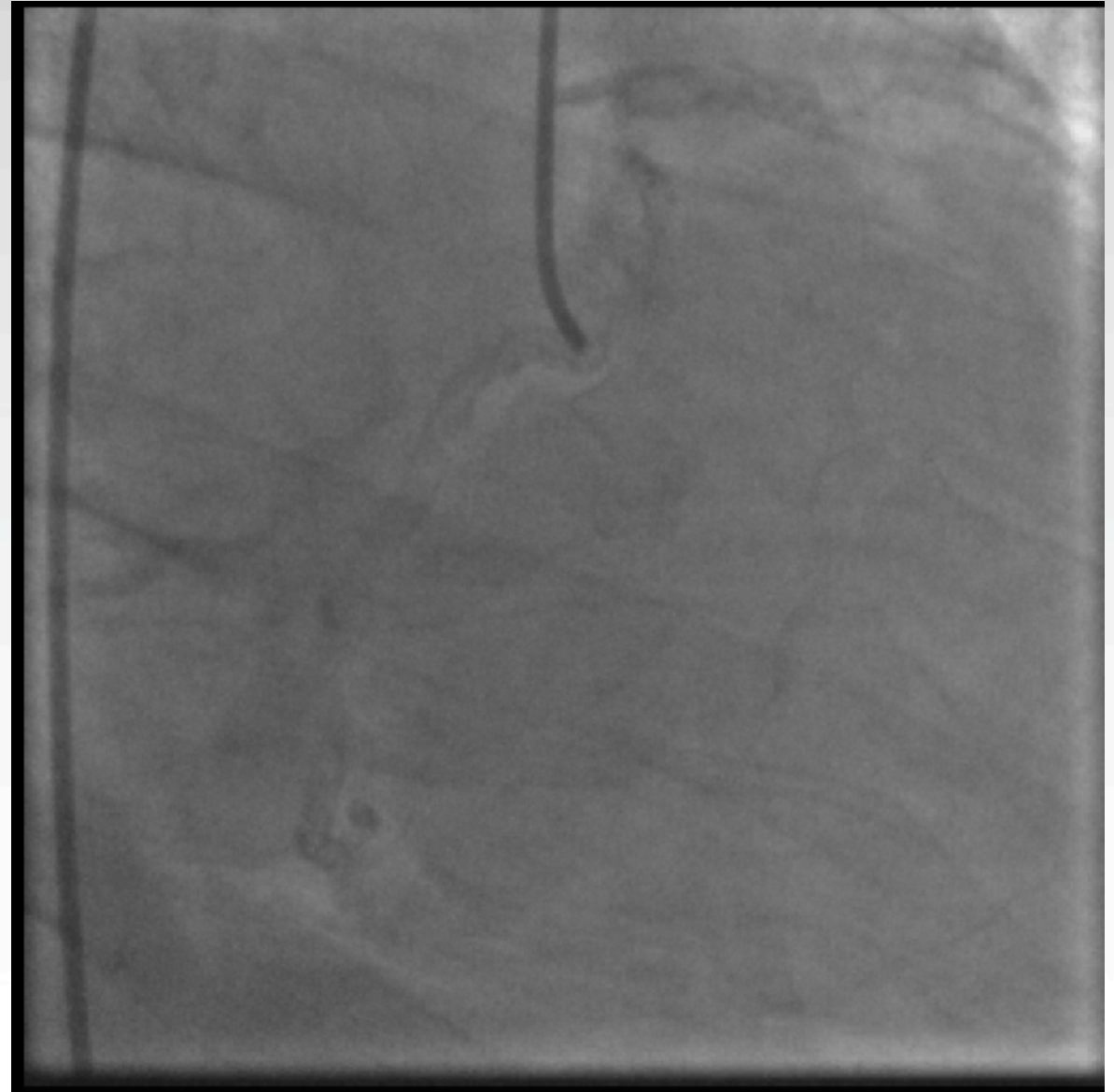
LCA-LAO cranial view

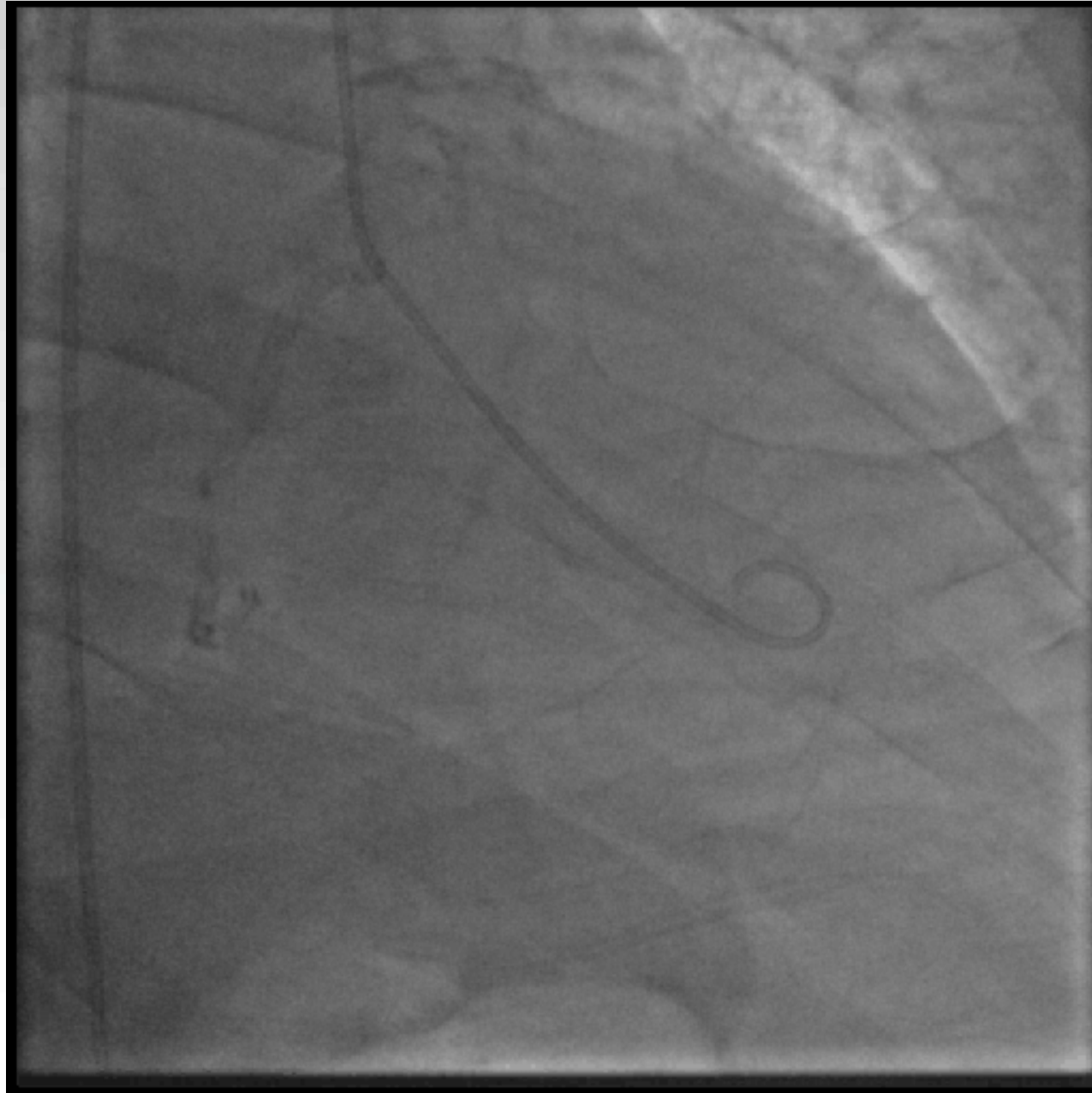


RCA-LAO view



RCA-RAO view





Heart Team approach (Interventional Cardiology, CTS, Structural Heart)

Risk Scores:

- Syntax I score: 47
- STS CABG only mortality: 13 %
- STS CABG only mortality and morbidity: 46 %
- STS CABG + MVR mortality: 27 %
- STS CABG + MVR mortality and morbidity: 66%

Structural Heart:

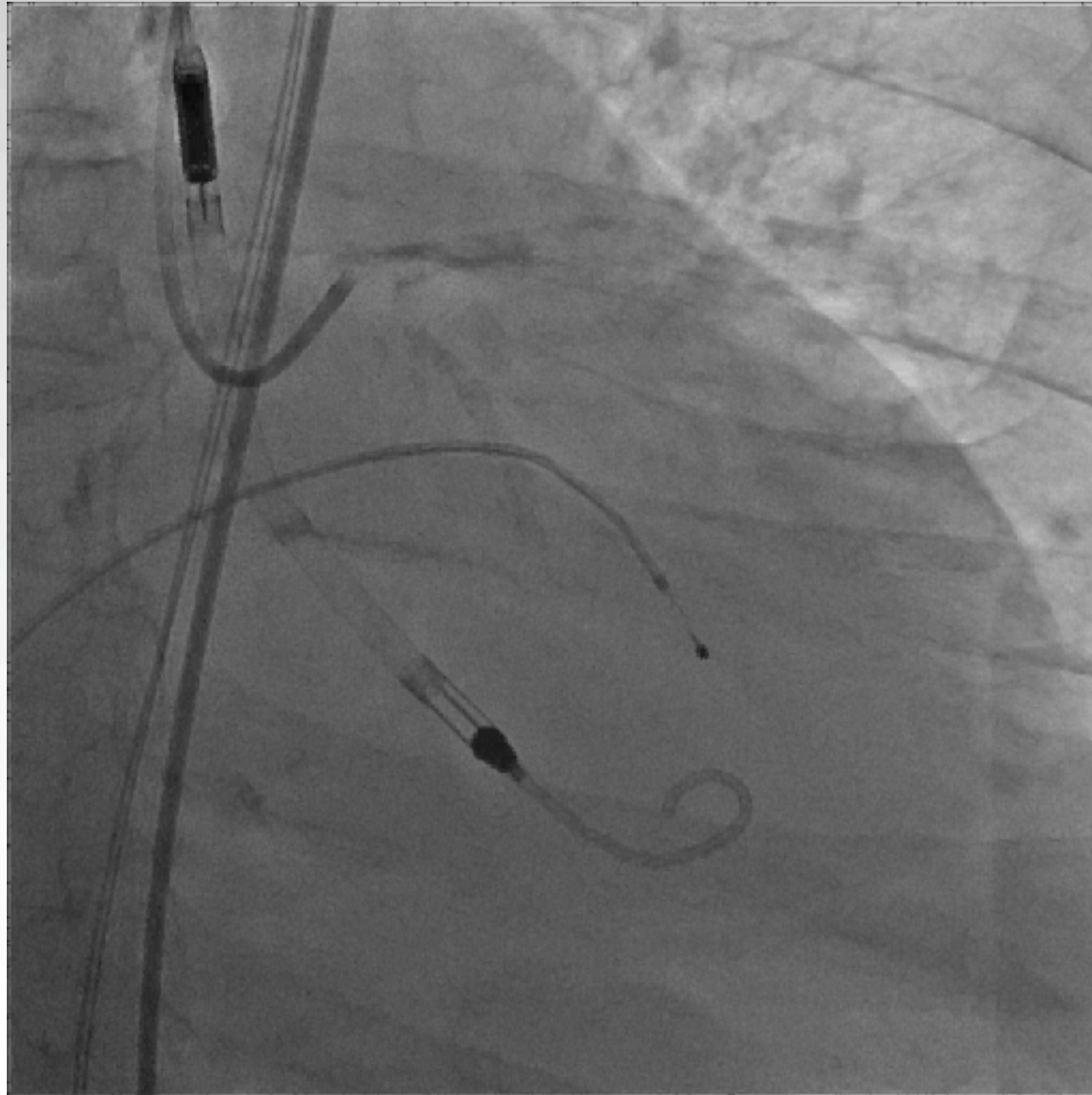
- Defer Mitraclip
- Revascularize first

Revascularization strategy:

- Complex high risk PCI with Impella support
- Goal: Total revascularization
- Rotational atherectomy
- DK crush for LM bifurcation

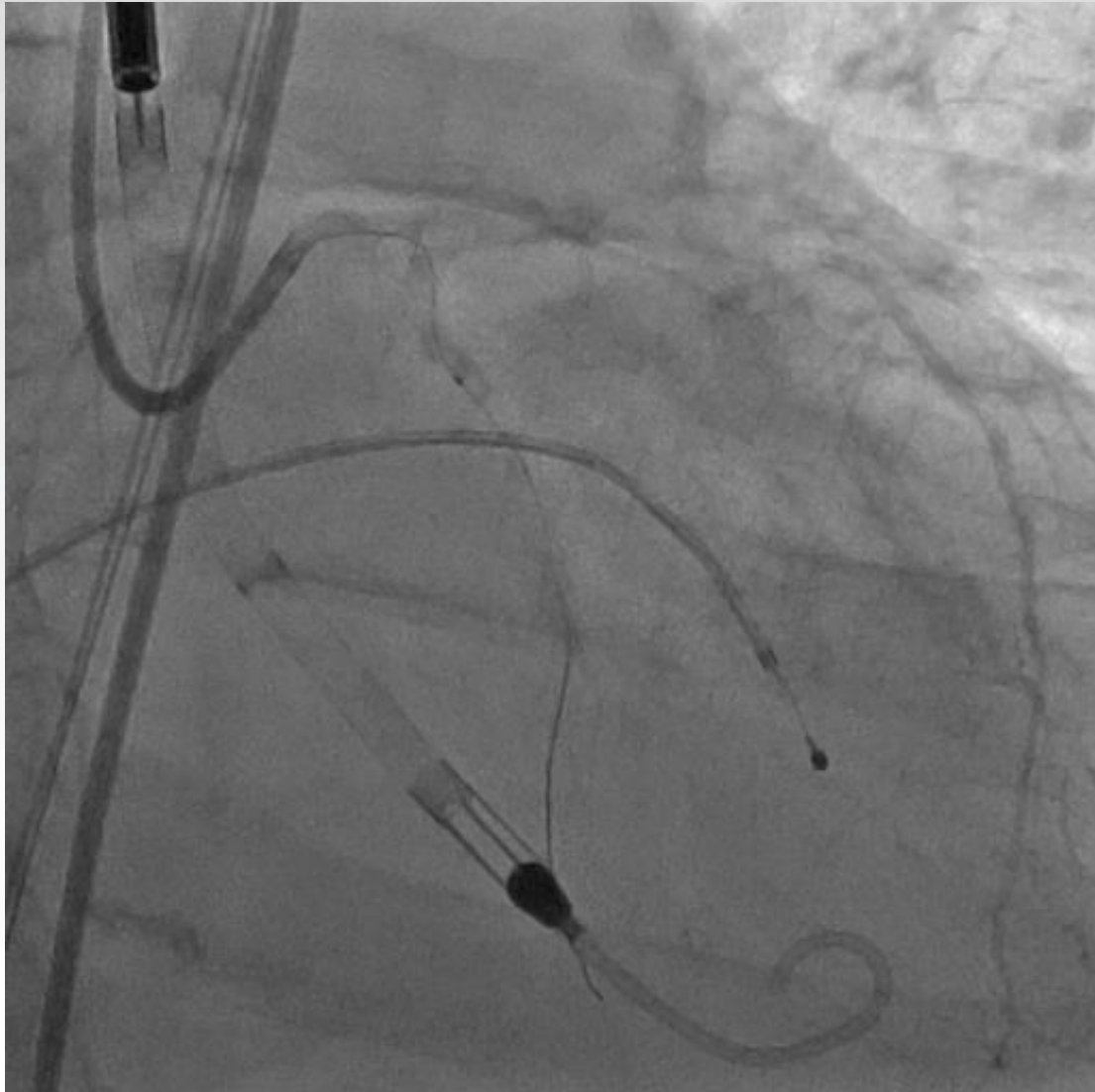
Baseline LCA

Impella CP LFA access



Temporary pacemaker

Crossed LCX with Pilot 50; unable to advance Finecross- Lesion crossed with Turnpike



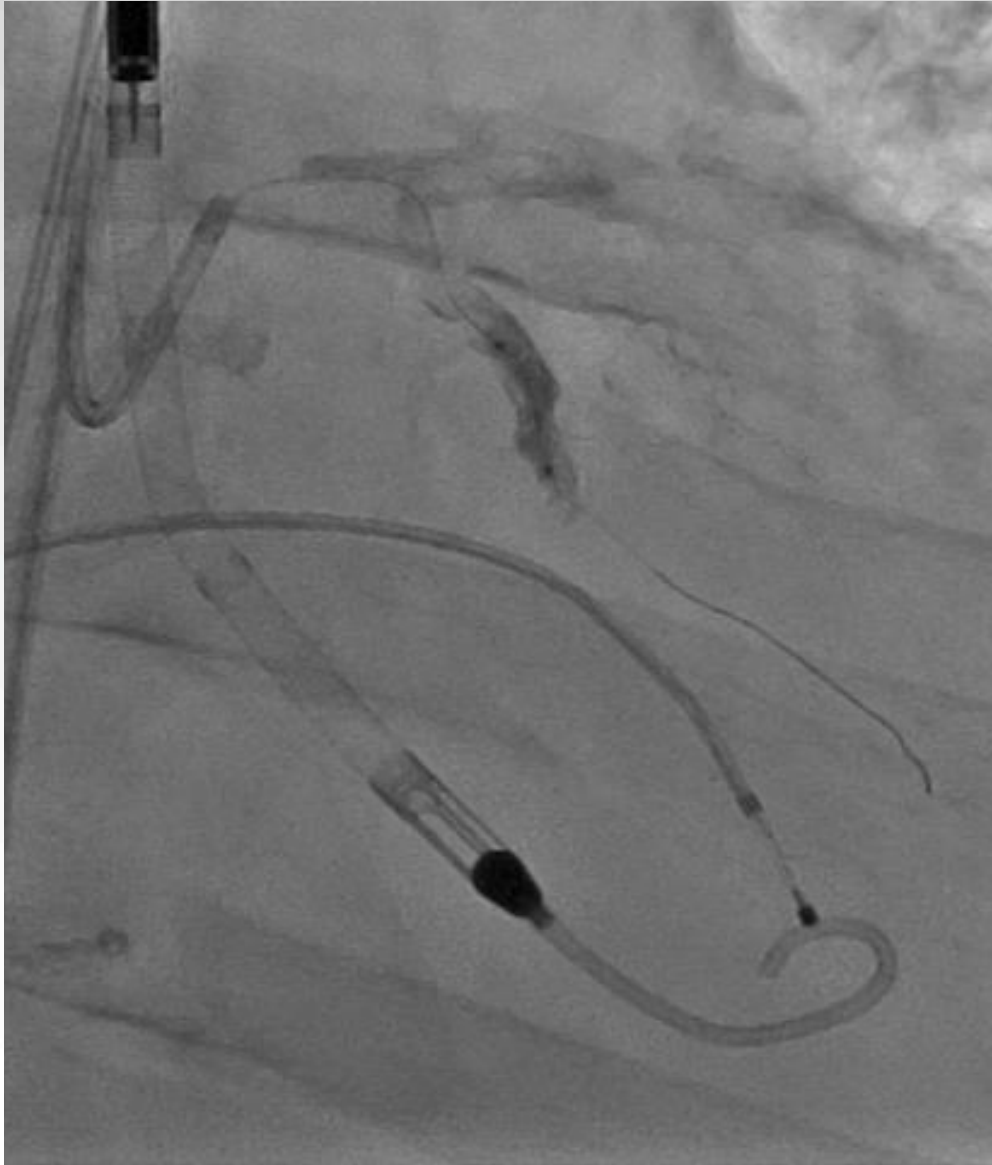
Rotablator 1.5 burr LCX



Dilatation with 1.5 balloon



**2.0 Balloon rupture
with vessel dissection**



**Dilatation with second 2.0 balloon with
Guideliner support**



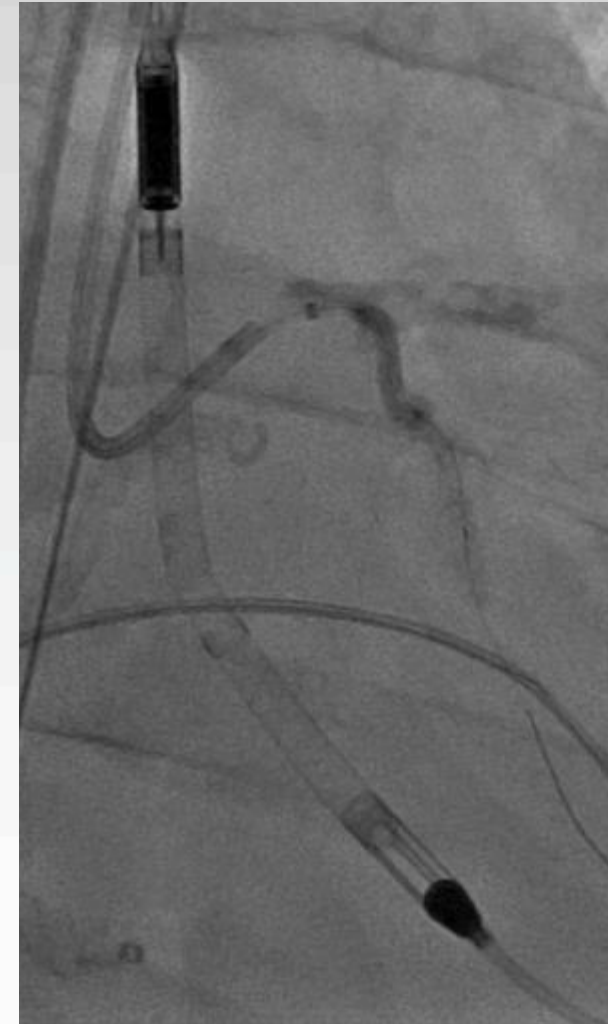
2.5 DES mid LCX



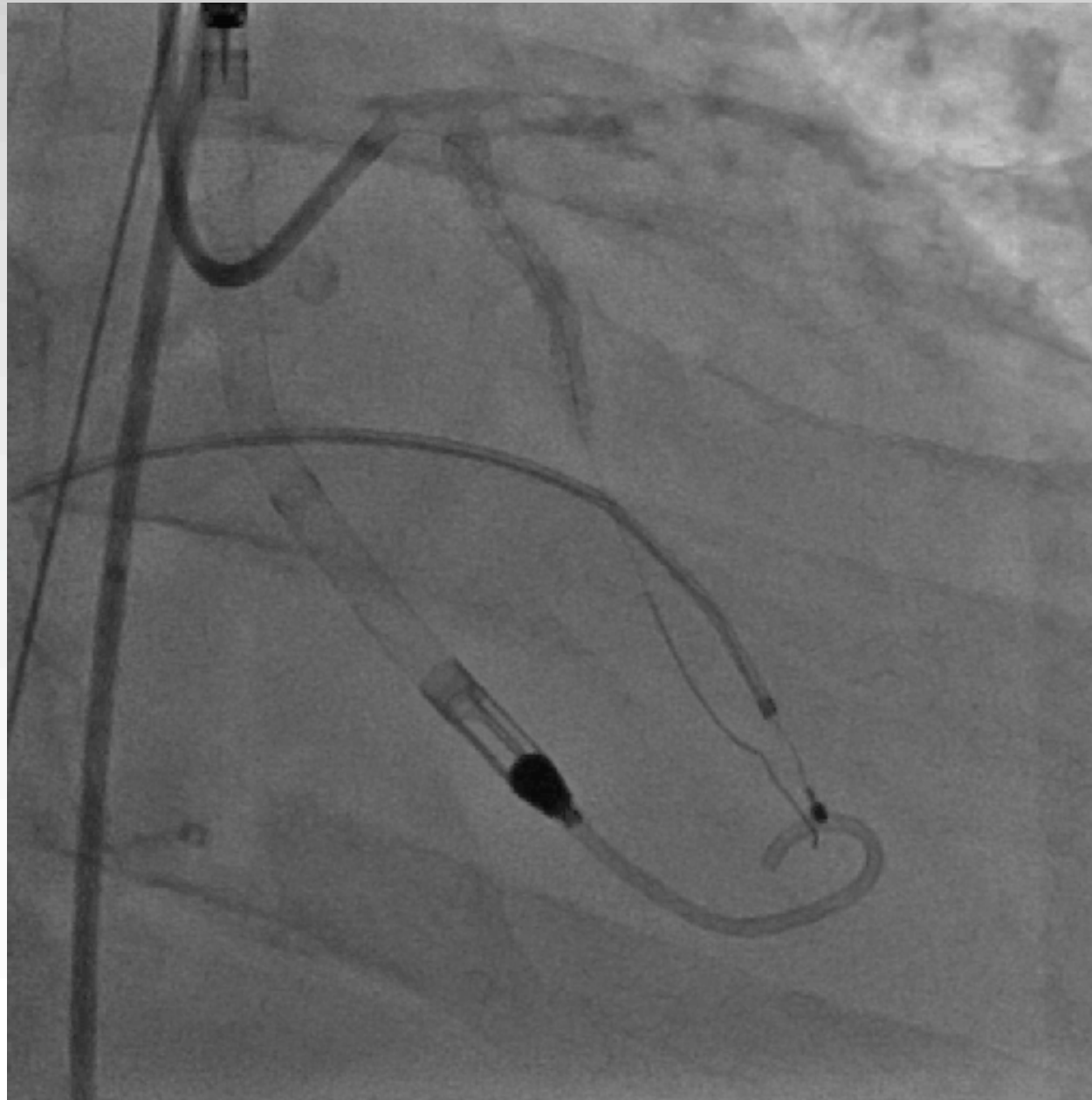
2.5 DES in prox LCX



Minimal protrusion into LM



Post LCX DES

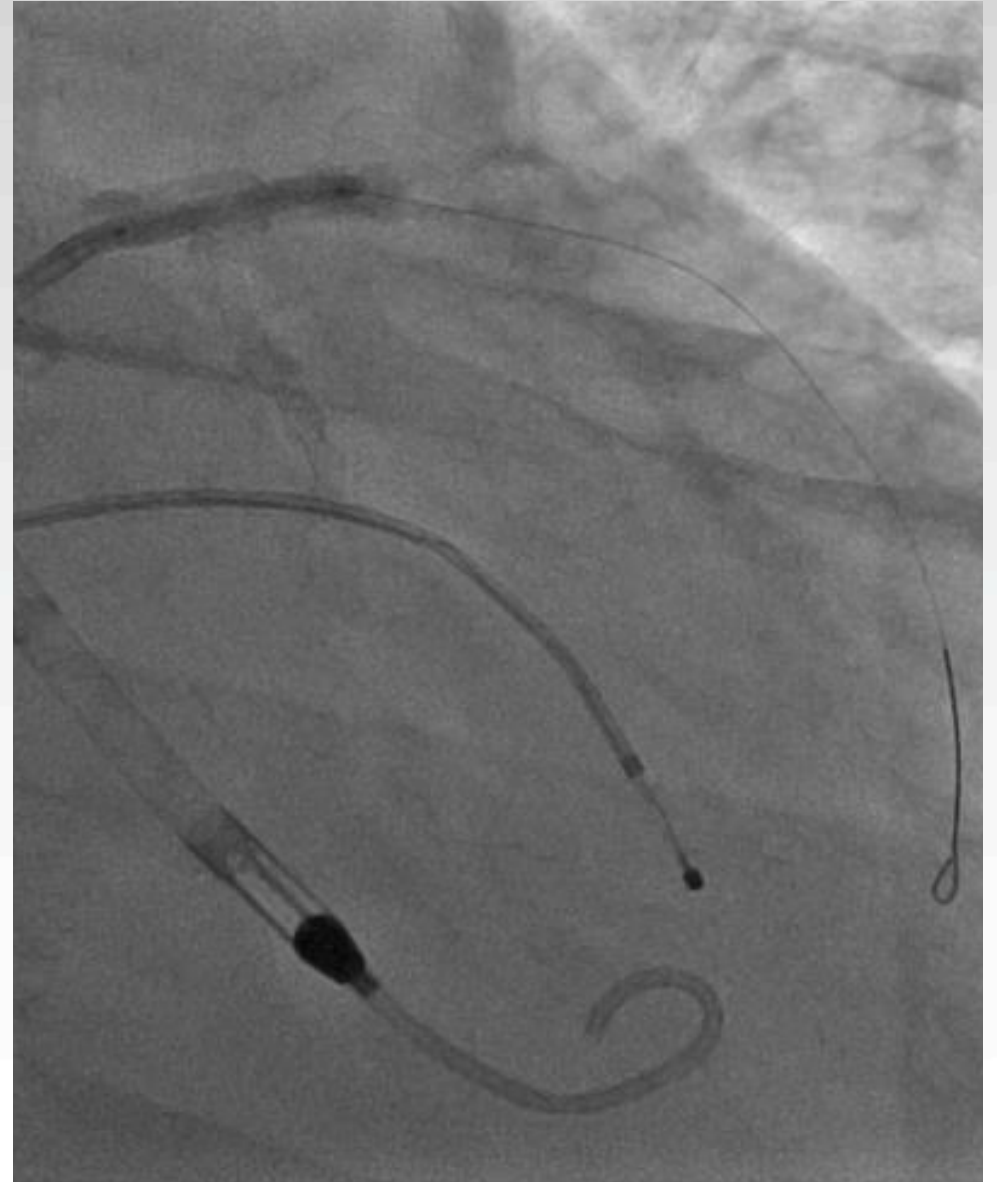




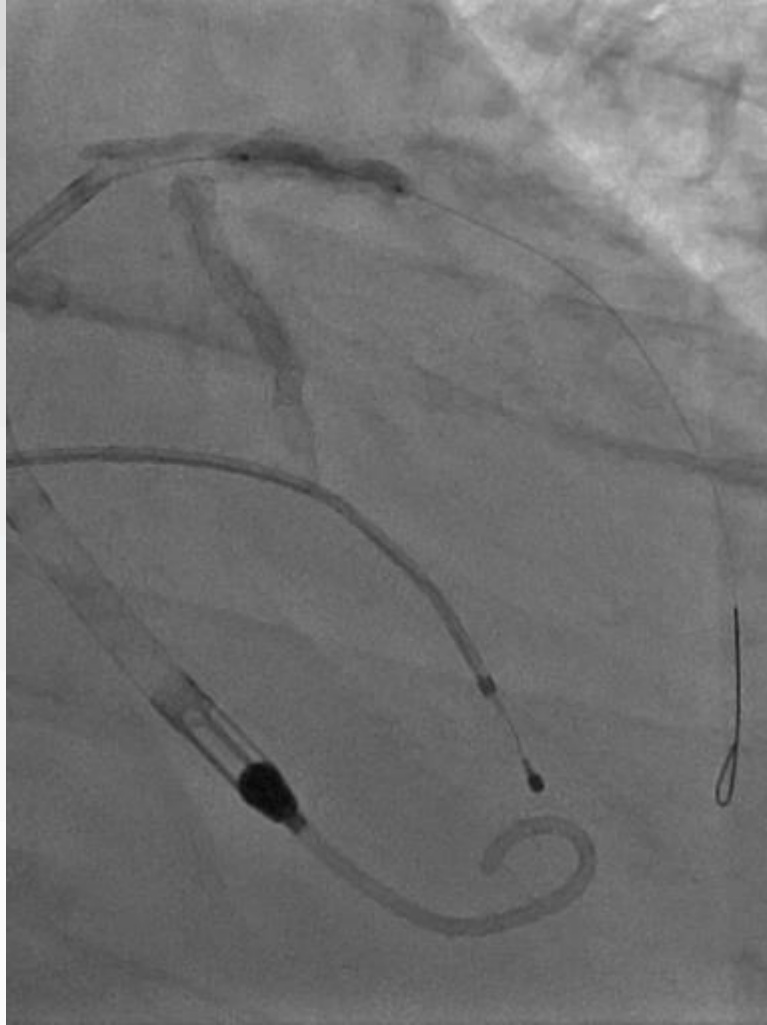
LAD Rotablation with same 1.5 burr



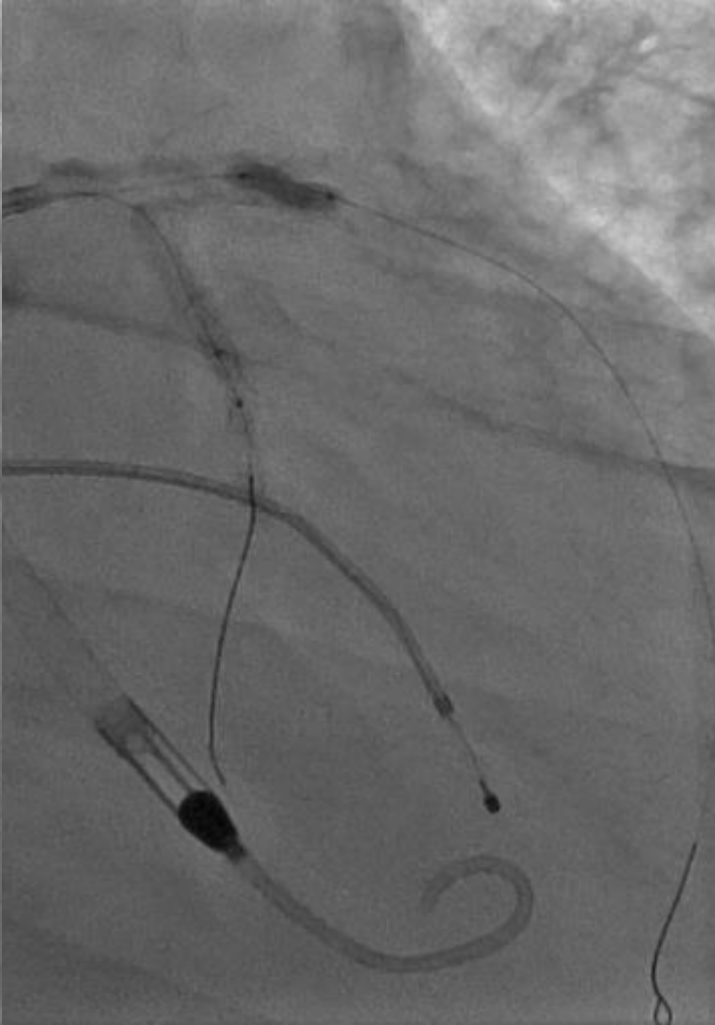
Balloon crush with 3.0 balloon of LCX ostial struts



PTCA prox LAD



NC balloon



LCX rewiring and 1st KBI

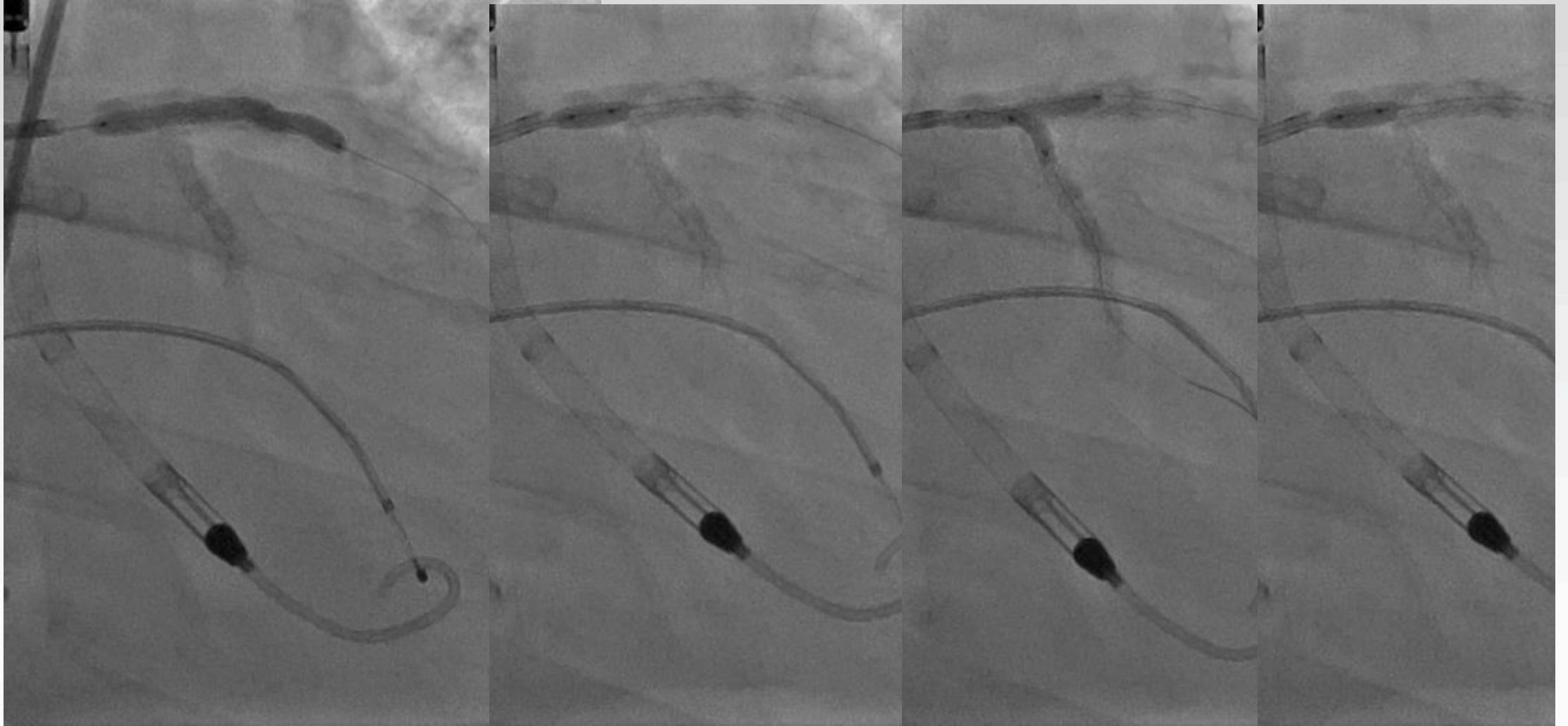


3.0 X 38 DES LM to LAD

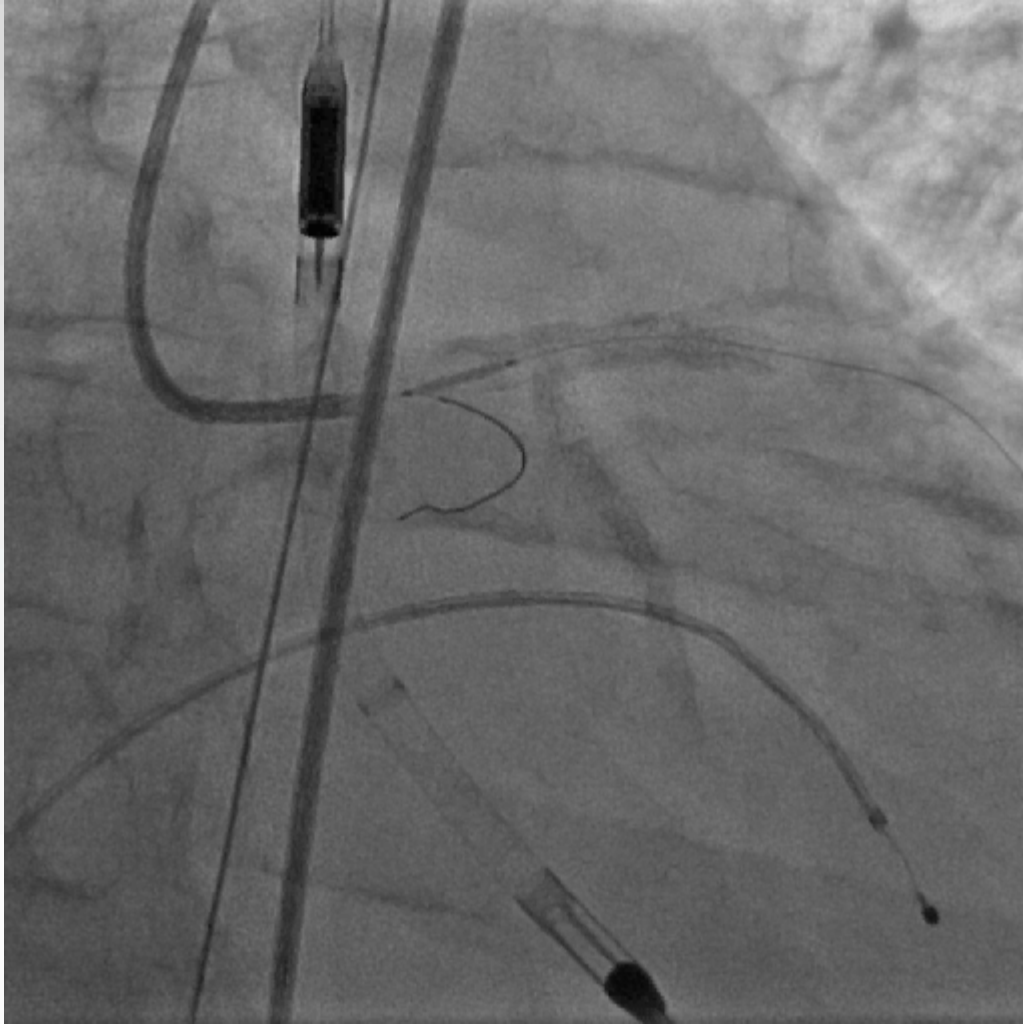
4.0 X 8 NC POT

**2nd KBI after
LCX recross**

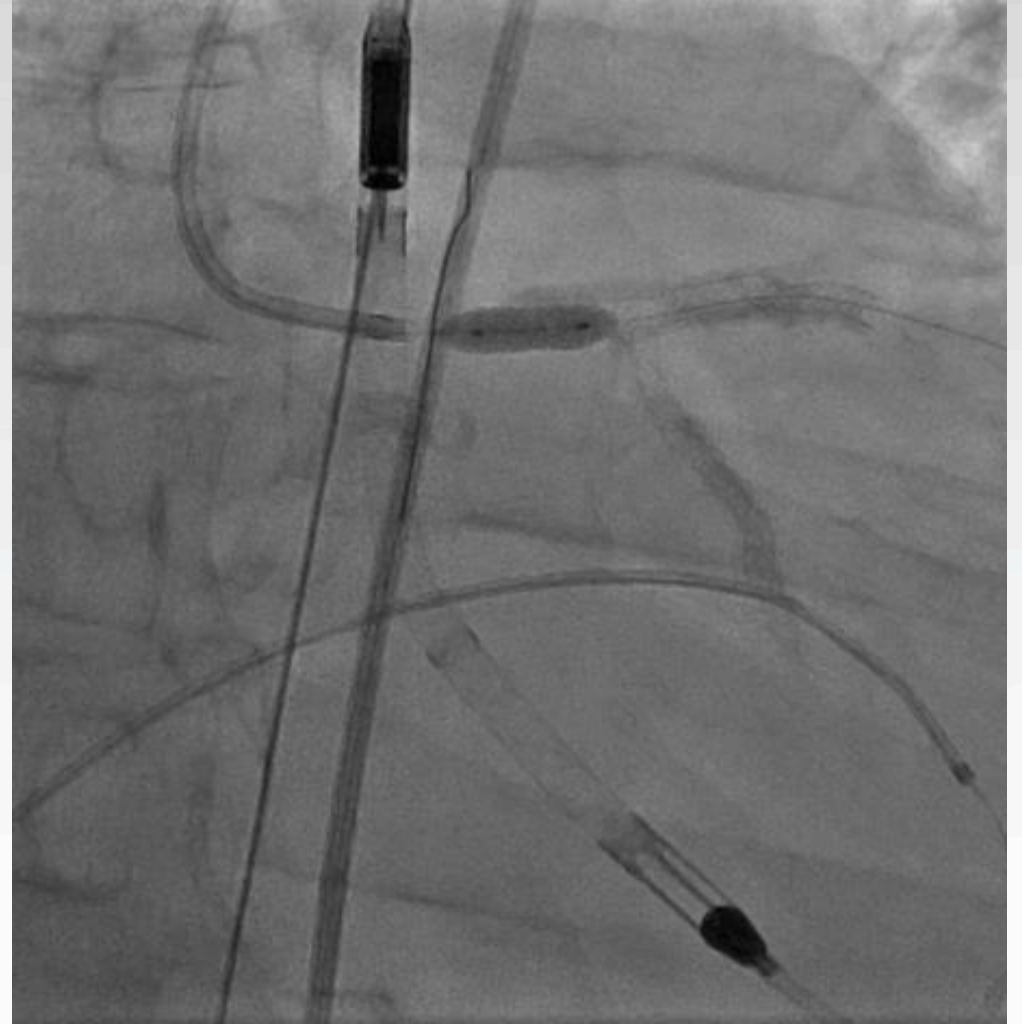
Re POT



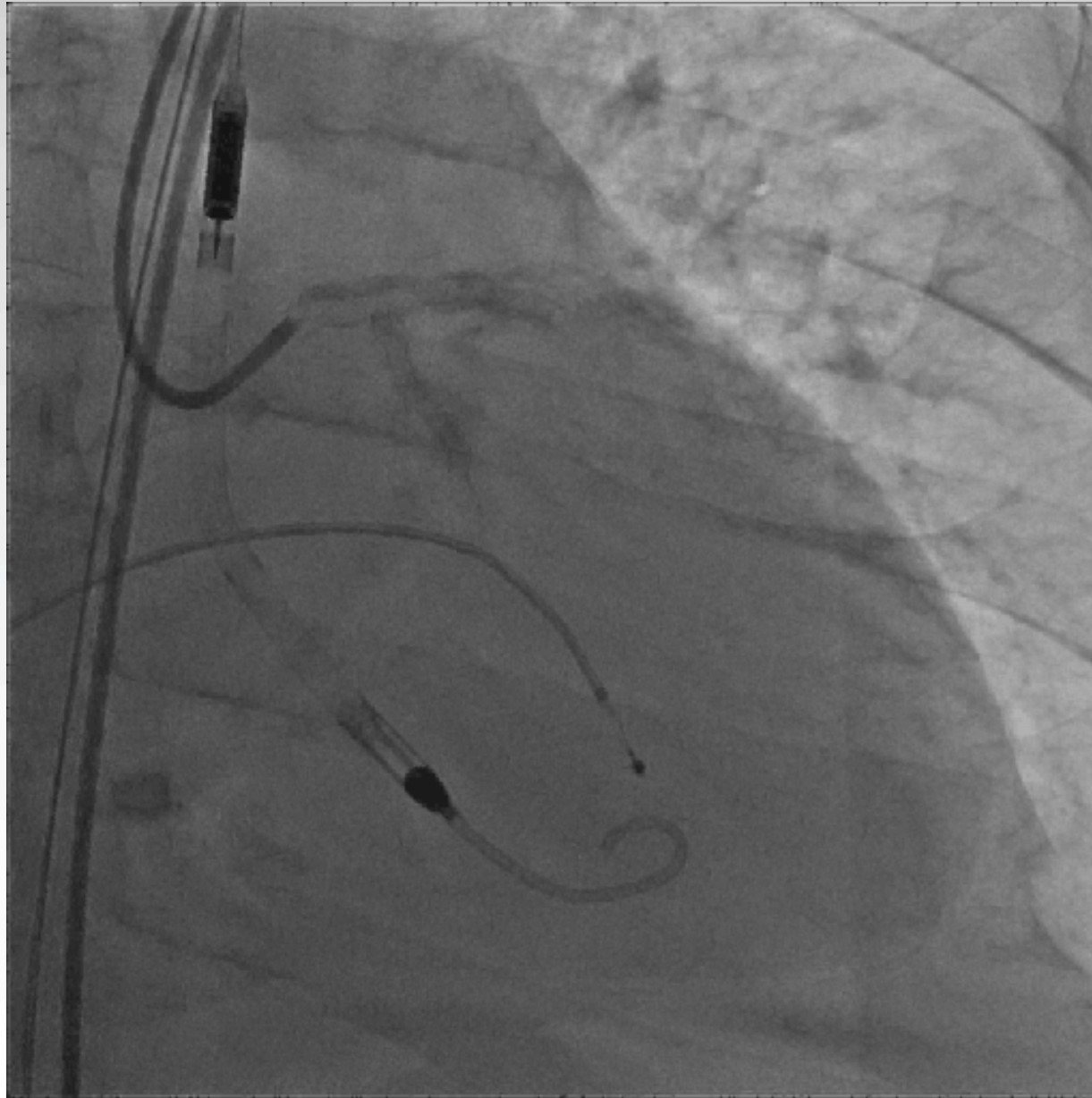
**LM Ostium not covered
4.0 X 8 DES placed**



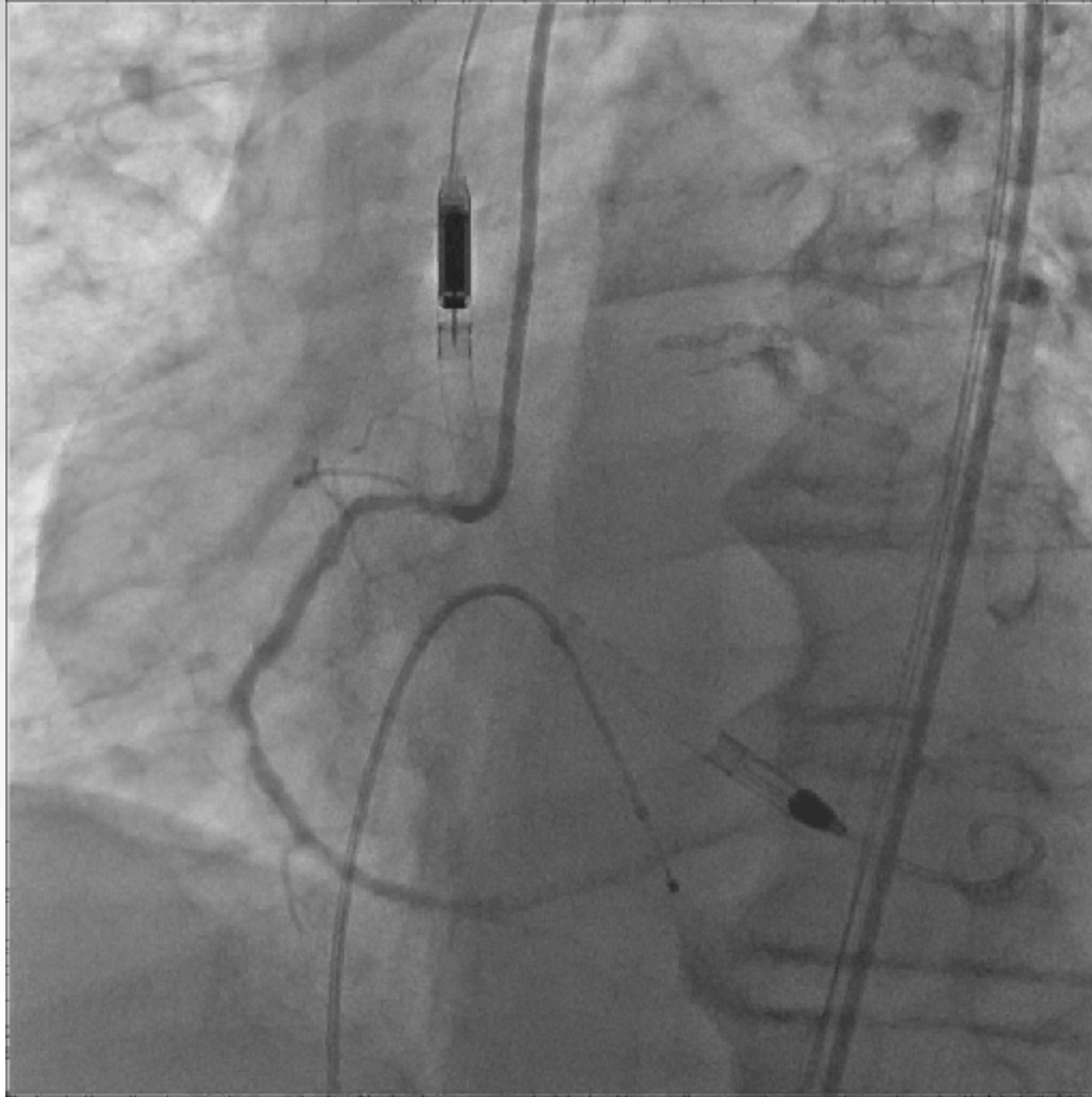
Post-dilatation with 4.5 NC balloon



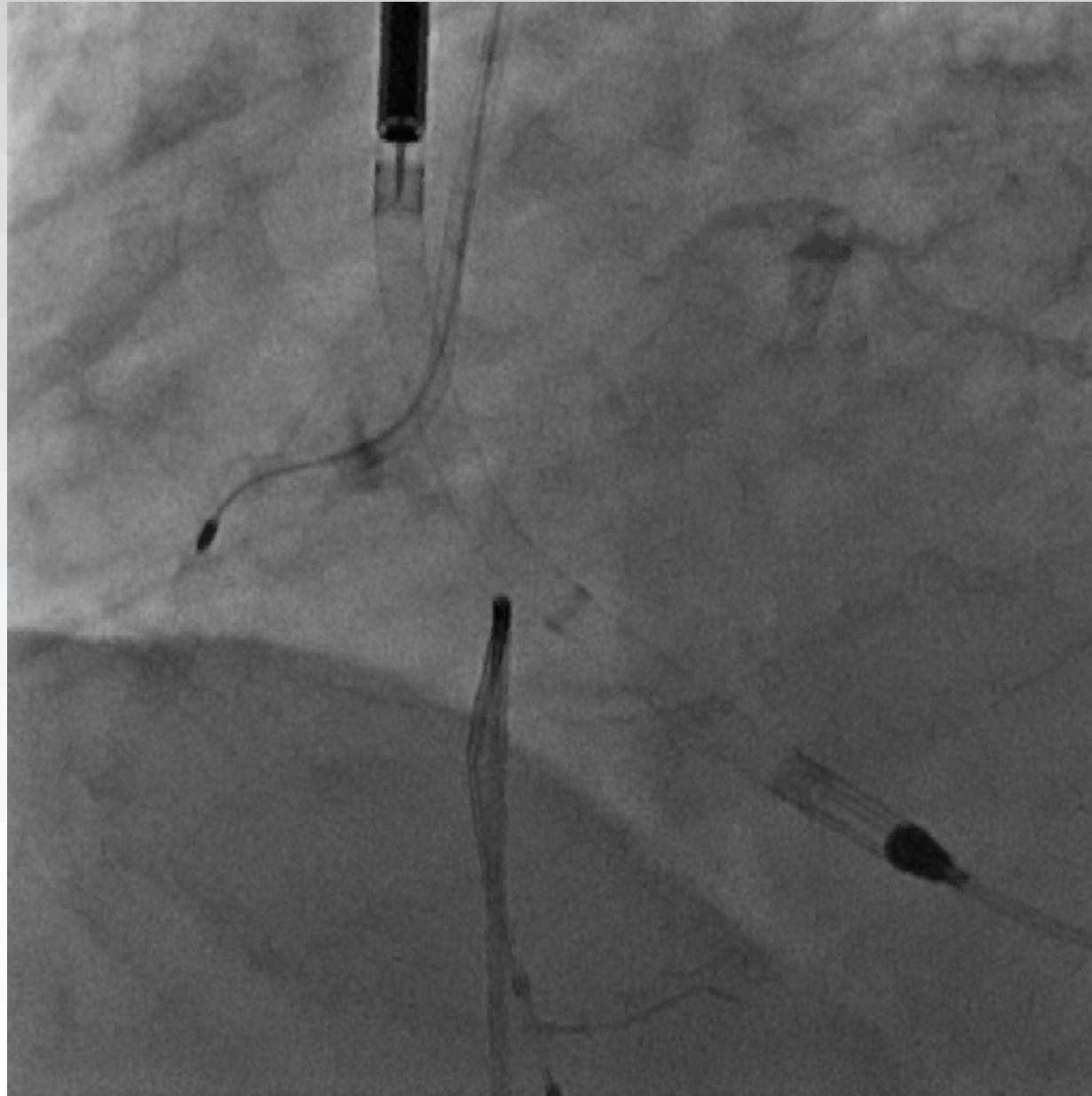
Final Result



RCA PCI: could not cross ostium with 1.5 balloon



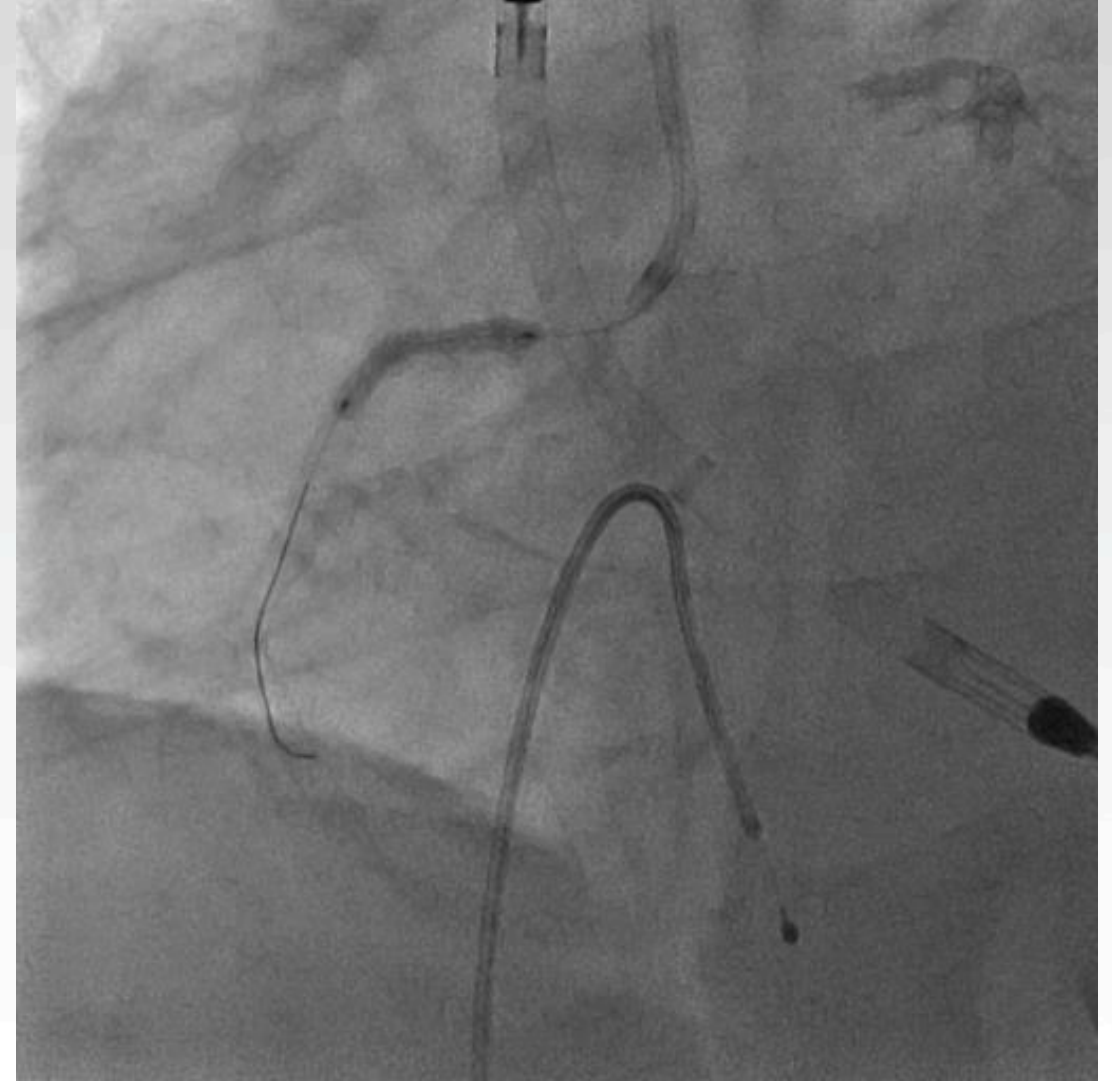
Rotablation with same 1.5 burr



3.0 x 15 mm DES



3.0 x 18 mm DES



Final Result



Outcomes

Procedural:

- Contrast: 300 cc
- Exposure: 4.5 Gy
- LVEDP: 22
- LFA preclosed; post closure completed after removal of 14 Fr Cook sheath
- RFA access sheath preclosed

In-hospital:

- Hemodialysis same night post procedure and on 3rd day post procedure
- Transfusion of 1 unit of blood
- Felt much improved and ambulant
- Home, post procedure day 4

At one year:

- Came off hemodialysis
- Creatinine stabilized at 3.0
- LVEF improved to 45 %
- MR improved (mild)
- Alive and well at 1 year